

# Wyse<sup>®</sup> Xenith<sup>™</sup>

The zero clients built for Citrix HDX.

**WYSE**  
| | | |

THE GLOBAL LEADER IN  
CLOUD CLIENT COMPUTING



**HDX**

Your desktop just got easier.  
**Wyse Xenith. Meet the family, here:**



# Meet Wyse Xenith The zero clients built for Citrix HDX

## Your desktop just got easier

Delivering major advances in performance, simplicity and longevity, the Wyse Xenith range of next generation zero clients are redefining the category Wyse itself created.

**Performance** It's built for Citrix HDX. So users receive an instant-on desktop and enjoy a rich media experience that doesn't tax servers and networks either.

**Simplicity** And it's easy too. With simple plug-n-play operation and auto-configuration.

**Longevity** Wyse Xenith takes care of everything it needs to stay uptodate by adapting to network security and protocol advances.

All from Wyse. The company building more zero clients today than anyone else. Yes: Anyone.

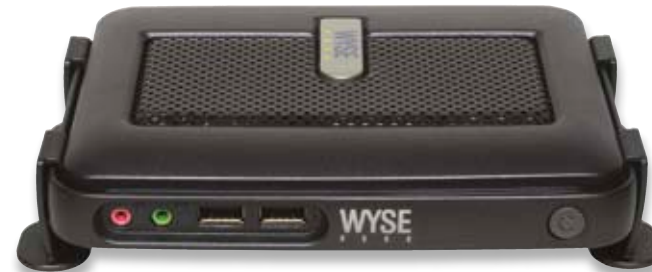
Meet the family:

### Wyse Xenith

With its compact footprint Wyse Xenith is the ideal companion device for Citrix XenDesktop and Citrix HDX technology.

### Wyse Xenith Pro

It's all about delivering a high-performance, high-connectivity zero client: going beyond anything ever offered before in 'Zero'.



Start

Models

Features

Technical

Contact

Print

# Features Wyse Xenith family

They might be zero clients, but the Wyse Xenith family lacks nothing in the cool-features department and arrives ready to go: straight out of the box.

**Just click on the icons below to discover more.**

Performance



Wyse Xenith Connectivity



Wyse Xenith Pro Connectivity



Green



Wyse Zero



Take a tour of the  
Wyse Xenith family



Start

Models

Features

Technical

Contact

Print

# Performance

## Why let your desktop hold you back?

We believe zero clients should give you a no limits experience. It's this vision and thinking that gets a Wyse Xenith zero client ready to work in just six seconds.

**Wyse Xenith's** compact efficient design is three times faster than competing devices and sports gigabit LAN and wireless-n, so it's ready for serious tasks whether you're wired in or not.

For those power users needing even more performance, connectivity and power, there's new **Wyse Xenith Pro**. It takes the Wyse Zero engine to entirely new levels of performance, connectivity and best of all: productivity. Proving that zero limitations means just that.



### Via C7 Processor

Advanced best performance per watt hardware accelerator



### AMD Sempron Processor

The advanced technology contained in this CPU from AMD lowers power consumption without compromising performance.

- AMD64 Technology
- PowerNow! technology
- HyperTransport technology

Continue tour



Start

Models

Features

Technical

Contact

Print

# Absolutely Zero That's Wyse Xenith

Welcome to a desktop with Zero limitations

## Zero Delays:

Go from 0 to productivity faster than a Ferrari.

Six seconds is all it takes to get up and running. Its Zero engine firmware – with a file size smaller than the average digital photo coupled with an efficient design – means it's three times faster than competing devices and sports gigabit LAN and wireless-n.

So it's ready for some serious tasks before most exotic sports cars have even warmed up. And with an industry-first media decoder in hardware, Wyse Xenith puts on a show with HD video performance that won't tax your server, network, budgets – or your patience.

## Zero Management:

That's right: no management. It's a zero configuration client.

Say goodbye to fiddling, tweaking and head-scratching. Just take it out of the box and connect it to your network. Job done. As Wyse Xenith and your Citrix XenDesktop server sets everything up to your exact preferences.

Amazingly Wyse Xenith is completely configurable too, yet no management software is needed. So unlike some other zero clients, when a hot new feature is released, you won't need to buy new ones to get it.

## Zero Security Issues:

Or worries either. Wyse Xenith is the only dynamically configurable zero client that is virus and malware immune. Yes, immune. There are no Windows or Linux APIs for viruses to latch on to, so even network and memory-borne viruses can't attack. Unlike other HDX compatible clients, Wyse Xenith needs absolutely no local firewall or anti-virus protection.

## Zero Energy Use (Almost):

Saves the earth. Literally. Wyse Xenith draws less than 7 watts of power in full operation. That's less than every PC on the planet. And no multimedia rich client on the market today uses less energy. Before you know it, the trees will be hugging you.

## Zero Compromise User Experience:

Built for Citrix HDX. Wyse Xenith lives and breathes Citrix XenApp and XenDesktop - and delivers quite simply the best Citrix HDX zero client this side of Win32, with HDX support that out paces any non-windows device on the market today.

Continue tour



Start

Models

Features

Technical

Contact

Print

# Wyse Zero engine It's all about Zero

Technology powering a new world of cloud connected smart devices

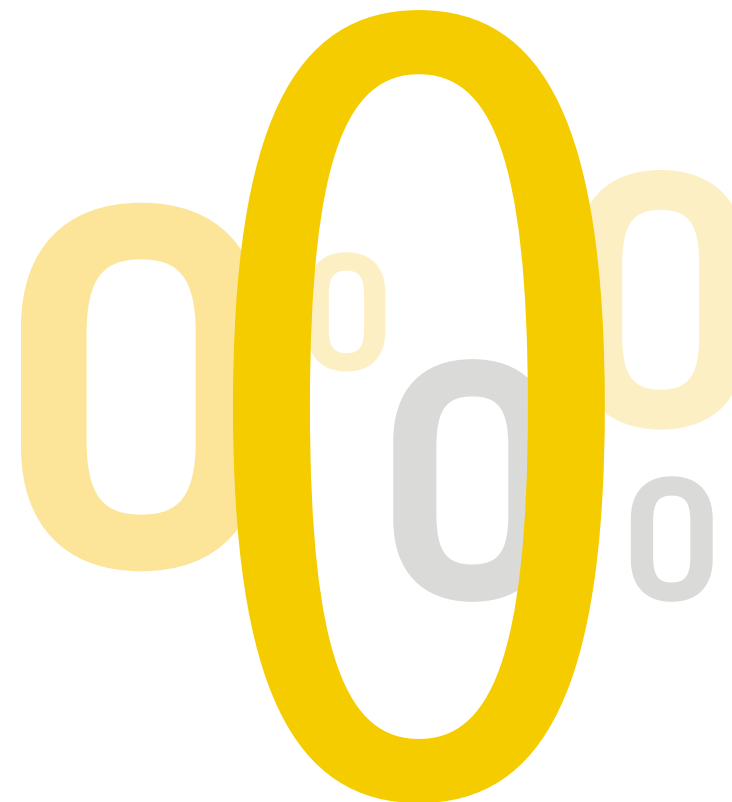
## Wyse Zero engine is software technology that simplifies the development of cloud-connected smart devices.

It's already in use in millions of devices, including thin clients, handheld smart devices and zero clients. And connects users to cloud computing services and virtual desktops with an efficient communications and protocol technology.

For example, Wyse PocketCloud uses Wyse Zero functionality to expand the iPhone and iPad's browsing capability to include Flash support, by intelligently using its cloud resources.

Wyse Zero engine is a mature, tested and purpose-built portable software technology for next generation zero clients and smart devices connecting to the internet and the cloud.

Its tiny footprint – less than the size of a digital photograph addresses the limitations with current embedded options, which can be up to 1GB or more in size – and requires just six seconds to boot devices into productive desktops. And since Wyse Zero engine is original technology – with no published API (like Windows or Linux-based embedded products) – it's inherently virus-free and secure.



Continue tour



Start

Models

Features

Technical

Contact

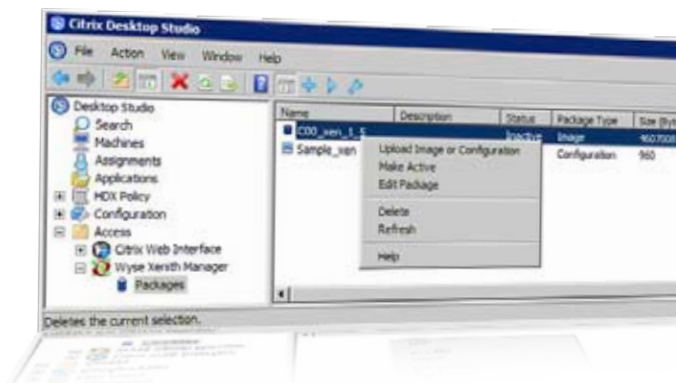
Print

# Wyse Xenith Dedicated software

## Citrix Receiver for Wyse Xenith

Designed by Wyse in collaboration with Citrix specifically for Wyse Xenith and Wyse Xenith Pro and provides:

- Citrix logon experience.
- HDX MediaStream for WMV, MPEG4, DivX, Etc.
- HDX Plug-n-Play.
- HDX WAN Optimization.
- HDX RealTime.
- Support for Access Gateway (in CSG mode).
- Progressive Display.
- Session Reliability.
- Desktop Restart.



## Wyse Xenith Manager

Designed in collaboration with Citrix, Wyse Xenith Manager, now part of XenDesktop 5, delivers tighter integration and vital flexibility and device longevity benefits. And, as it's provided on the Citrix XenDesktop 5 install media – Citrix XenDesktop and Wyse Xenith™ deliver a fully integrated and unprecedented combination of simplicity, performance and security for office-based workers, while ensuring a high-definition user experience.

Integrated intelligence works with Citrix XenDesktop to take care of discovery, initial configuration and updates through the network – as well as giving you control – when and if you need it.

Wyse Xenith is the only endpoint integrated into XenDesktop 5 management console (Desktop Studio).

Continue tour



Start

Models

Features

Technical

Contact

Print

# Wyse Xenith or Wyse Xenith Pro?

## Wyse Xenith

With its compact footprint Wyse Xenith is the ideal companion device for Citrix XenDesktop and Citrix HDX technology.

Choose Wyse Xenith when you need a compact zero client for:

- Fast plug-n-play deployment
- Fast boot-up and production readiness
- Auto-configuration and zero management
- The best Citrix HDX user experience
- High density user workstations
- Highly scalable deployments
- Risk free data access in sensitive environments
- Multiple-user hot desking
- Multimedia and high definition graphics
- Minimal energy use and reduced carbon footprint.
- Wyse Xenith Manager, provided on the Citrix XenDesktop 5 install media

We'll help you choose which **Wyse Xenith** will suit you best.

## Wyse Xenith Pro

Builds on the success of its little brother and goes beyond every other zero client on the planet too – with additional processing power, higher performance and even higher levels of connectivity.

Choose Wyse Xenith Pro when you need a zero client for:

- Twice the Citrix HDX performance – for truly dazzling multimedia, HD Flash content and unified communications.
- Users needing dual digital display support and L-shaped configurations.
- Class-leading connectivity: with 6 USB and 2 serial ports for excellent up to date and legacy peripheral support.

Continue tour



Start

Models

Features

Technical

Contact

Print

# Connectivity Wyse Xenith



Mount Wyse Xenith to the rear of a monitor with optional mounting kit (uses free VESA mounts).



DVI-I Video output for one or two displays (dual displays require optional splitter cable)

Two PS/2 ports for keyboard and mouse

Wi-fi antenna connector for optional 802.11 b/g

Kensington lock slot

10/100/1000 Base-T Ethernet port

Four available external USB 2.0 ports (2 front; 2 back)

Audio out: 1/8-inch mini jack, 16 bit stereo

Audio in: 1/8-inch mini jack, 8 bit stereo microphone



Continue tour



Start

Models

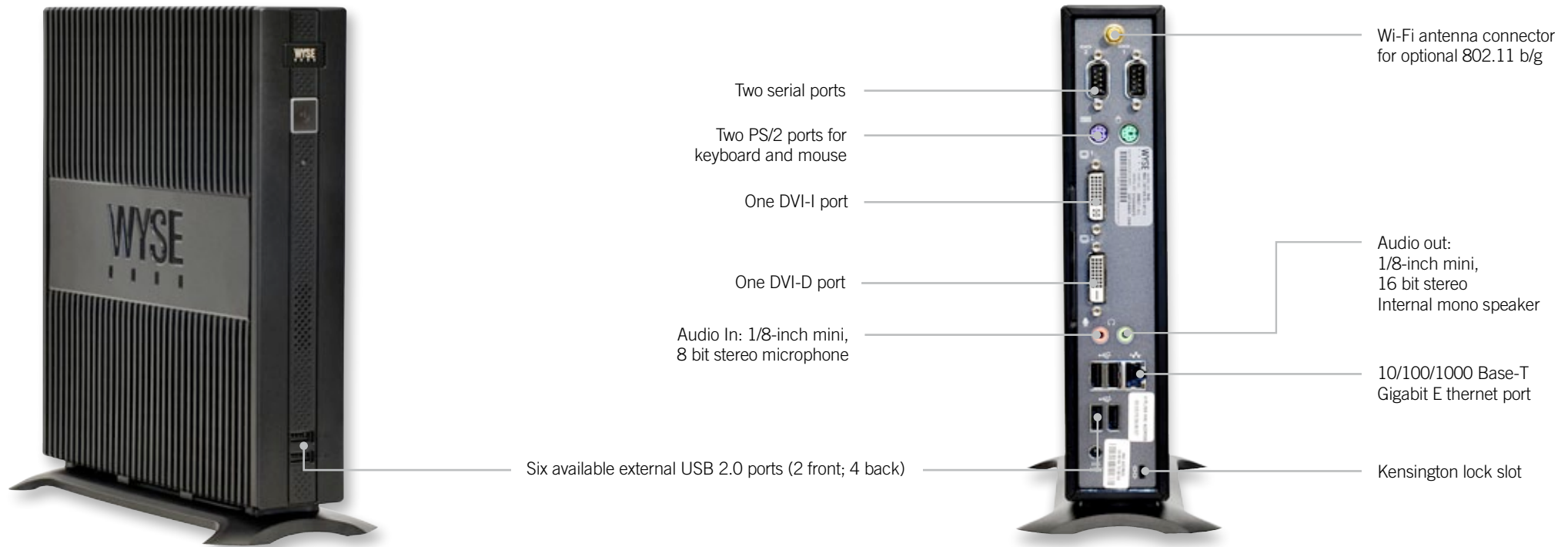
Features

Technical

Contact

Print

# High performance connectivity Wyse Xenith Pro



Continue tour



Start

Models

Features

Technical

Contact

Print

# Desktop computing without compromise



EarthSmart Computing™



Wyse Xenith



Wyse Xenith Pro

## That's Wyse EarthSmart™ Computing

Through our EarthSmart Computing initiative we are committed to helping organizations implement a greener computing strategy – one that delivers a more efficient and productive computing experience for your users with a positive effect on energy wastage, heat and carbon emissions.

### Green Power

The Wyse Xenith family packs a considerable punch with their green credentials. From reduced manufacturing impact and end-of-life recycling waste, to as little as 7 watts energy consumption, deploying Wyse Xenith zero clients will enable your organization to achieve a lighter carbon footprint.

### More Information

Download carbon calculators, fact sheets and white papers from here:  
[www.wyse.com/green](http://www.wyse.com/green)

Continue tour



Start

Models

Features

Technical

Contact

Print

# Technical Wyse Xenith family

Wyse Xenith and Wyse Xenith Pro feature a wealth of features. Check them all out here. If you have any further questions about your deployment, simply contact your Wyse representative.

**Simply click the icons below.**

Wyse Xenith



Wyse Xenith Pro



Start

Models

Features

Technical

Contact

Print

# Hardware specifications Wyse Xenith

<b>Processors</b>	1 GHz Via C7 Processor
<b>Memory</b>	128MB Flash / 512MB RAM
<b>I/O peripheral support</b>	One DVI-I port, DVI to VGA (DB-15) adapter included Dual-video support with optional DVI-I to DVI-D plus VGA-monitor splitter cable (sold separately) Four USB 2.0 ports (2 front, 2 back) Two PS/2 ports One mic In / One line Out
<b>Included</b>	Enhanced PS/2 keyboard with Windows keys (104 keys) and PS/2 optical mouse
<b>Networking / Comm</b>	10/100/1000 Base-T Gigabit Ethernet Internal 802.11 b/g (optional)
<b>Display</b>	VESA monitor support with Display Data Control (DDC) for automatic setting of resolution and refresh rate Dual monitor supported Single: 1920x1200@60Hz, color depth: 8, 15, 16, 24 or 32bpp Two independent full resolution frame buffers Dual: 1920x1200@60Hz, color depth: 8, 15, 16, 24 or 32bpp
<b>Audio</b>	Output: 1/8-inch mini jack, full 16 bit stereo, 48KHz sample rate Input: 1/8-inch mini jack, 8 bit stereo microphone
<b>Physical characteristics</b>	Height: 1.38 inches (34mm) Width: 6.94 inches (177mm) Depth: 4.75 inches (121mm)

<b>Shipping Weight</b>	6 lbs. (2.7kg)
<b>Mountings</b>	Horizontal feet (optional vertical stand) Optional VESA mounting bracket
<b>Device Security</b>	Built-in Kensington security slot (cable sold separately)
<b>Power</b>	Worldwide auto-sensing 100-240 VAC, 50/60 Hz. Energy Star® V.5.0 compliant power supply. Average power usage with device connected to 1 keyboard with 1 PS/2 mouse and 1 monitor: Under 7 Watts
<b>Temperature Range</b>	Horizontal and vertical operating positions: 50° to 104° F (10° to 40° C)
<b>Humidity</b>	20% to 80%
<b>Certifications</b>	German EKI-ITB 2000, ISO 9241-3/-8 cULus 60950, TÜV-GS, EN 60950 FCC Class B, CE, VCCI, C-Tick WEEE, RoHS Compliant
<b>Warranty</b>	Three-year hardware warranty Visit our web site for WyseChoice extensions and upgrades



Start

Models

Features

Technical

Contact

Print

# Hardware specifications Wyse Xenith Pro

<b>Processors</b>	1.5 GHz AMD Sempron Processor
<b>Memory</b>	128MB Flash / 512MB RAM
<b>I/O peripheral support</b>	One DVI-I Port / One DVI-D Port Two PS/2 ports / Two serial ports Six external USB 2.0 ports (2 front, 4 back) One Mic In / One Line Out
<b>Included</b>	Enhanced PS/2 keyboard with Windows keys (104 keys) and PS/2 optical mouse
<b>Networking / Comm</b>	10/100/1000 Base-T Gigabit Ethernet 802.11 b/g (factory option)
<b>Display</b>	VESA monitor support with Display Data Control (DDC) for automatic setting of resolution and refresh rate Dual monitor supported Single: 2560x1600 32 bpp 60Hz Dual: 2560x1600 32 bpp 60Hz
<b>Audio</b>	Output: 1/8-inch mini, 16 bit stereo. Internal mono speaker Input: 1/8-inch mini, 8 bit stereo microphone
<b>Physical characteristics</b>	Height: 9.80 inches (250mm) Width: 8.80 inches (225mm) Depth: 2.10 inches (53mm)

<b>Shipping Weight</b>	6.50 lbs. (2.95kg)
<b>Mountings</b>	Vertical feet (optional horizontal feet) Optional VESA mounting bracket
<b>Device Security</b>	Built-in Kensington security slot (cable sold separately)
<b>Power</b>	Worldwide auto-sensing 100-240 VAC, 50/60 Hz. Energy Star® V.5.0 compliant power supply. Average power usage with device connected to 1 keyboard with 1 PS/2 mouse and 1 monitor: 14.6 Watts in idle state
<b>Temperature Range</b>	Horizontal position: 50° to 95° F (10° to 35° C) Vertical position: 50° to 104° F (10° to 40° C)
<b>Humidity</b>	20% to 80%
<b>Certifications</b>	German EKI-ITB 2000, ISO 9241-3/-8 cULus 60950, TÜV-GS, EN 60950 FCC Class B, CE, VCCI, C-Tick WEEE, RoHS Compliant
<b>Warranty</b>	Three-year hardware warranty Visit our web site for WyseChoice extensions and upgrades



Start

Models

Features

Technical

Contact

Print

# Contact Wyse

## Wyse Technology Inc.

3471 North First Street,  
San Jose,  
CA 95134-1801

## Visit our website at:

<http://www.wyse.com>  
or send an email to: [sales@wyse.com](mailto:sales@wyse.com)

## Wyse Sales

800 GET WYSE (800 438 9973)

## International customers please dial:

00 1 408 473 1200

## Wyse Support Portal

Wyse Support Portal provides a fast and accurate way to communicate interactively with Wyse Customer Support, and helps us respond to your requests more quickly.

<http://support.wyse.com/selfservice.html>

Wyse offers cloud client computing sales, service and support expertise around the globe. Click for contact details.



©2012 The Wyse logo and Wyse are trademarks of Wyse Technology Inc. Other product names mentioned herein are for identification purposes only and may be trademarks and/or registered trademarks of their respective companies. All specifications are subject to change without notice. Whilst we make every effort to ensure the accuracy of the details, specifications, models, images and benefits featured in this datasheet, we cannot be held responsible for any errors and/or omissions. If you have any queries regarding Wyse products please contact your authorized regional Wyse Partner or representative for further information and assistance. Some features require support by server operating system and protocol. Approved final 110112.

**WYSE**  
| | | |  
**wyse.com**  
THE GLOBAL LEADER IN  
CLOUD CLIENT COMPUTING



Start

Models

Features

Technical

Contact

Print

# Wyse® Xenith™ family

Your desktop just got easier

# WYSE

THE GLOBAL LEADER IN  
CLOUD CLIENT COMPUTING

## The zero clients built for Citrix® HDX

Delivering major advances in performance, simplicity and longevity, the Wyse Xenith family of next generation zero clients – **Xenith** and **Xenith Pro** – are redefining the ‘zero’ category Wyse itself created.

## Absolutely Zero. That’s Wyse Xenith

Which means – **Zero Delays:** with a six second start up time.

**Zero Management:** Pure plug-and-play auto set-up that does everything including ongoing updates. **Zero Security Issues:**

No Windows or Linux APIs means immunity from viruses or malware.

**Zero Energy Use (Almost):** less than 7 watts of power in operation.

**Zero Compromise User Experience:** Built for Citrix – Wyse Xenith and Xenith Pro live-and-breathe Citrix XenApp, XenDesktop and HDX.

## Dedicated software and management

Wyse Xenith Manager, now part of XenDesktop 5, delivers tighter integration, vital flexibility and device longevity benefits. And, as it’s provided on the Citrix XenDesktop 5 install media, Citrix XenDesktop and Wyse Xenith deliver a fully integrated and unprecedented combination of simplicity, performance and security for office-based workers, while ensuring a high-definition user experience.

Wyse Xenith is the only family of endpoints integrated into the Citrix XenDesktop 5 management console (Desktop Studio).

## Green

From reduced manufacturing impact and end-of-life recycling waste, to as little as 7 watts energy consumption in operation, deploying Wyse Xenith zero clients will enable your organization to achieve a lighter carbon footprint.

## Compare and choose your ideal Wyse Xenith zero client

CITRIX® HDX

### Wyse Xenith

#### Overview

With its compact footprint Wyse Xenith is the ideal companion device for Citrix XenDesktop and Citrix HDX technology – ‘straight-out-of-the-box’.

#### Superb performance and user experience

From the start superb performance is the promise behind every Wyse Xenith. It’s ready to plug-and-play, with its Via C7 Processor and advanced best performance-per-watt hardware accelerator, delivering productive desktops in under six seconds.

Wyse Xenith users benefit from high performance connectivity that includes support for two high resolution displays, four USB ports and two PS/2 ports for a host of peripherals, fast gigabit Ethernet and b/g/n WiFi. And all this can be tucked away securely out-of-sight with mounting brackets for fitting behind monitors.

While Wyse Xenith Manager, included on Citrix Xenith Manager 5, means looking after them is as easy as using them.



### Wyse Xenith Pro

#### Overview

Wyse Xenith Pro is the high-performance, high-connectivity zero client for Citrix HDX.

#### Ultimate performance boost

Wyse Xenith Pro offers twice the processing power for Citrix HDX users, with stunning playback and display of multimedia and Flash. And its AMD Sempron Processor does it all while lowering power consumption – without compromising performance.

Users are treated to enhanced display support that includes rotation and unparalleled connectivity with 2 DVI ports, 6 USB ports and 2 serial ports. And just like Wyse Xenith, Xenith Pro frees up desk space with mounting brackets for fitting behind monitors, under desks and to walls.



Call Wyse: 800 GET WYSE (800 438 9973)

[wyse.com](http://wyse.com)

# Specifications

## Wyse Xenith

## Wyse Xenith Pro

<b>Processors</b>	1 GHz Via C7 Processor	1.5 GHz AMD Sempron Processor
<b>Memory</b>	128MB Flash / 512MB RAM	128MB Flash / 512MB RAM
<b>I/O peripheral support</b>	One DVI-I port, DVI to VGA (DB-15) adapter included Dual-video support with optional DVI-I to DVI-D plus VGA-monitor splitter cable (sold separately) Four USB 2.0 ports (2 front, 2 back) Two PS/2 ports One mic In / One line Out	One DVI-I port / One DVI-D port Two PS/2 ports / Two serial ports Six external USB 2.0 ports (2 front, 4 back) One mic In / One line Out
<b>Included</b>	Enhanced PS/2 keyboard with Windows keys (104 keys) and PS/2 optical mouse	Enhanced PS/2 keyboard with Windows keys (104 keys) and PS/2 optical mouse
<b>Networking / Comm</b>	10/100/1000 Base-T Gigabit Ethernet Internal 802.11 b/g (optional)	10/100/1000 Base-T Gigabit Ethernet Internal 802.11 b/g (optional)
<b>Display</b>	VESA monitor support with Display Data Control (DDC) for automatic setting of resolution and refresh rate Dual monitor supported Single: 1920x1200@60Hz, color depth: 8, 15, 16, 24 or 32bpp Two independent full resolution frame buffers Dual: 1920x1200@60Hz, color depth: 8, 15, 16, 24 or 32bpp	VESA monitor support with Display Data Control (DDC) for automatic setting of resolution and refresh rate Dual monitor supported Single: 2560x1600 32 bpp 60Hz Dual: 2560x1600 32 bpp 60Hz
<b>Audio</b>	Output: 1/8-inch mini jack, full 16 bit stereo, 48KHz sample rate Input: 1/8-inch mini jack, 8 bit stereo microphone	Output: 1/8-inch mini, 16 bit stereo. Internal mono speaker Input: 1/8-inch mini, 8 bit stereo microphone
<b>Physical characteristics</b>	Height: 1.38 inches (34mm) Width: 6.94 inches (177mm) Depth: 4.75 inches (121mm)	Height: 9.80 inches (250mm) Width: 8.80 inches (225mm) Depth: 2.10 inches (53mm)
<b>Shipping Weight</b>	6 lbs. (2.7kg)	6.50 lbs. (2.95kg)
<b>Mountings</b>	Horizontal feet (optional vertical stand) Optional VESA mounting bracket	Vertical feet (optional horizontal feet) Optional VESA mounting bracket
<b>Device Security</b>	Built-in Kensington security slot (cable sold separately)	Built-in Kensington security slot (cable sold separately)
<b>Power</b>	Worldwide auto-sensing 100-240 VAC, 50/60 Hz. Energy Star® V.5.0 compliant power supply Average power usage with device connected to 1 keyboard with 1 PS/2 mouse and 1 monitor: Under 7 Watts	Worldwide auto-sensing 100-240 VAC, 50/60 Hz. Energy Star® V.5.0 compliant power supply Average power usage with device connected to 1 keyboard with 1 PS/2 mouse and 1 monitor: 14.6 Watts in idle state
<b>Temperature Range</b>	Horizontal and vertical operating positions: 50° to 104° F (10° to 40° C)	Horizontal position: 50° to 95° F (10° to 35° C) Vertical position: 50° to 104° F (10° to 40° C)
<b>Humidity</b>	20% to 80%	20% to 80%
<b>Certifications</b>	German EKI-ITB 2000, ISO 9241-3/-8 cULus 60950, TÜV-GS, EN 60950 FCC Class B, CE, VCCI, C-Tick WEEE, RoHS Compliant	German EKI-ITB 2000, ISO 9241-3/-8 cULus 60950, TÜV-GS, EN 60950 FCC Class B, CE, VCCI, C-Tick WEEE, RoHS Compliant
<b>Warranty</b>	Three-year hardware warranty Visit our web site for WyseChoice extensions and upgrades	Three-year hardware warranty Visit our web site for WyseChoice extensions and upgrades

Wyse Technology Inc.  
3471 North First Street  
San Jose, CA 95134-1801

Visit our website at:  
<http://www.wyse.com>  
Or send email to: [sales@wyse.com](mailto:sales@wyse.com)

Wyse Sales  
800 GET WYSE  
(800 438 9973)

Wyse Support Portal:  
A fast and accurate way to communicate  
interactively with Wyse Customer Support.  
<http://support.wyse.com/selfservice.html>

©2012 The Wyse logo and Wyse are trademarks of Wyse Technology Inc. Other product names mentioned herein are for identification purposes only and may be trademarks and/or registered trademarks of their respective companies. Specifications subject to change without notice. Some features require support by server operating system and protocol. Approved final 110112.

**WYSE**  
| | | | |  
THE GLOBAL LEADER IN  
CLOUD CLIENT COMPUTING  
**wyse.com**