



NetXpress XL Series O/S Administrator's Guide

Important Information

Thank you for purchasing the Netier NetXpress XL thin-client computer. Your satisfaction is important to us. If you experience any problems, please call **1-888-603-1892** for friendly, helpful technical support. Or if you prefer, contact us via Email at **techsupp@netier.com**.

Important Safeguards

Please read all instructions, and save these instructions for future reference. Always unplug your NetXpress XL computer from the wall outlet before cleaning. Do not use liquid cleaners or aerosol cleaners. Use a damp cloth for cleaning. Only use manufacturer-approved peripherals and attachments. Unapproved peripherals and attachments may be hazardous to system operation.

Do not use this computer near water.

Do not place this computer on an unstable cart, stand, or table. The computer may fall, causing serious personal injury as well as damage to the appliance. Use only with a stand recommended by the manufacturer.

Slots and openings in the NetXpress XL case are provided for ventilation. To ensure reliable operation of the computer and to protect it from overheating, do not block or cover these openings. Never place the NetXpress XL near or over a radiator or other heat source. Also, do not place your NetXpress in a built-in installation, such as a bookcase or shelf, unless proper ventilation is provided.

Operate your NetXpress XL only from the power source type indicated on the label. If you are not sure of the type of power supplied in your home or office, please consult your value added reseller (VAR) or local power company.

The NetXpress XL is equipped with a three-wire grounding plug, which is a common plug type that incorporates a third pin for grounding. This plug will only fit into a grounding-type power outlet, which contains three receptacles. This design provides added safety. If you are unable to insert the plug into the outlet, contact your electrician to replace your outlet.

Caution: Do not remove the grounding prong under any circumstances.

Do not allow anything to rest on the power cord. Locate your NetXpress XL such that the power cord is protected from traffic.

Follow all warnings and instructions listed on the computer.

To protect your NetXpress XL from power surges, unplug it from the wall outlet when not in use for long periods. Do not overload wall outlets and extension cords as this can result in fire or electric shock.

Never push objects of any kind into your NetXpress XL computer case slots. Foreign objects can damage the computer and may result in fire or electric shock.

In the event any liquid is spilled on the unit, immediately unplug the external power supply at the wall outlet. If any liquid has penetrated openings in the unit, contact your hardware service provider before you attempt to apply power to the unit again.

Do not attempt to service your NetXpress XL yourself because opening or removing covers may expose you to dangerous voltage or other hazards. Refer all servicing to qualified service personnel. Unplug this computer from the wall outlet and refer servicing to qualified service personnel under the following conditions:

- When the power cord or plug is damaged or frayed.
- If liquid has been spilled into the computer.
- If the computer has been exposed to rain or water.
- If the computer does not operate normally when the operating instructions are followed. Adjust only those controls that are covered by the operating instructions. Improper adjustment of other controls may result in damage and will often require extensive work by a qualified technician to repair the computer.
- If the computer has been dropped or the cabinet has been damaged.
- When the computer exhibits a distinct change in performance, indicating a need for service.

When replacement parts are required, be sure the service technician uses replacement parts approved by the manufacturer. Use of unauthorized replacement parts may result in fire, electric shock, or other hazards.

Upon completion of any service or repairs to your NetXpress XL, ask the service technician to perform routine safety checks to ensure the computer is in safe operating condition.

Notice

The information in this manual is subject to change without notice.

The information contained in this manual was reviewed and validated. While every precaution was taken during the preparation of this manual, Netier Technologies, Inc. makes no warranty of any kind with regard to this material, including, but not limited to, the implied warranties of merchantability and fitness for a particular purpose.

Netier Technologies, Inc. is not liable for errors contained herein or for incidental or consequential damages in connection with the furnishing, performance, or use of this material.

No part of this document may be photocopied, reproduced, or translated to another language without prior written consent of Netier Technologies, Inc.

Print History

First edition—July 1998

© Copyright 1998 by Netier Technologies, Inc.

Federal Communications Commission Notice

This equipment has been tested and found to comply with the limits for a Class A computing device, pursuant to Subpart B of Part 15 of FCC Rules. Only peripherals (computer input/output devices, monitors, printers, etc.) certified to comply with the Class A limits may be attached to this computer. Operation with non-certified peripherals is likely to result in interference to operation.

NOTICE: This equipment generates and uses radio frequency energy, and if not installed and used in strict accordance with this user guide, interference to operation may result. It has been type tested and found to comply with the limits for a Class A computing device, pursuant to Part 15 of FCC Rules, which are designed to provide reasonable protection against such interference in a residential installation. However, there is no guarantee that interference will not occur in a particular installation. If this equipment does cause interference to radio or television reception, which can be determined by turning the equipment on and off, you are encouraged to try to correct the interference by one or more of the following measures:

- Reorient the receiving antenna.
- Relocate the NetXpress XL Series thin client with respect to the receiver.
- Move the NetXpress XL Series thin client away from the receiver.
- Plug the computer into a different outlet so that the NetXpress XL Series thin client and the receiver are on different branch circuits.

If necessary, consult your reseller for additional suggestions.

You may find the following booklet prepared by the Federal Communications Commission (FCC) helpful: *How to Identify and Resolve Radio-TV Interference Problems*. This book is available from the U.S. Government Printing Office, Washington, D.C. 20402.

Trademarks

Netier Technologies, Inc. and its logos are trademarks of Netier Technologies, Inc.

Citrix, Independent Computing Architecture (ICA), Direct ICA, SecureICA, MetaFrame, and ICA are registered trademarks or trademarks of Citrix Systems, Inc. in the U.S.A and other countries.

All other registered and unregistered trademarks are trademarks of their respective holders.

Technical Support

Netier Technologies Technical Support information:

Telephone 1-888-603-1892

Email techsupp@netier.com

Netier Technologies, Inc.
 1625 West Crosby Road, Suite 100
 Carrollton, TX 75006-6686

Terms

The following list of terms is intended to help you better understand your NetXpress XL Series thin client and its capabilities.

| Term | Definition |
|--------------------|---|
| CPU | Central Processing Unit; The CPU is the brain of the computer. Sometimes referred to simply as the processor or central processor, the CPU is where most calculations take place. |
| Ethernet | The most widely-installed local area network technology; Fast Ethernet or 100/10BASE-T provides transmission speeds up to 100 Mbps. |
| IrDa | Infrared Data Association; IrDa is a wireless data communication protocol that uses a focused ray of light in the Infrared frequency spectrum to transmit data over a relatively short distance. IR is the same technology used to control a TV set with a remote control. |
| LED | Light Emitting Diode; a small indicator light which will emit a color determined by a combination of the gas sealed in the lens, the color of the plastic casing, and the amount of electrical signal sent to the LED. Your NetXpress-XL unit incorporates two LED's in the front panel. One is a power indicator that is green and remains steady when the unit's main power is switched on, and the other is a Hard Disk activity indicator that is also green. This indicator will remain off unless your XL unit is equipped with a hard disk drive that is accessing data on that internal disk. |
| Pixel | A word invented from the terms "picture" and "element"; the basic unit of programmable color on a computer display or in a computer image. |
| PS/2 Keyboard port | 6-pin (Mini-Din) port dedicated to connection of the computer's keyboard. Utilizing this port allows your serial port(s) to be used by another device. |
| PS/2 Mouse port | 6-pin (Mini-Din) port dedicated to connection of the computer's mouse pointing device. Utilizing this port allows your serial port(s) to be used by another device. |

| Term | Definition |
|-------------------|---|
| RS-232C COM1/2 | RS-232C is the interface your computer uses to talk to and exchange data with your modem and other serial devices. |
| USB | Universal Serial Bus; a "plug-and-play" (PnP) interface between a computer and add-on devices (such as audio players, joysticks, keyboards, telephones, scanners, and printers). With USB, a new device can be added to your computer without having to add an adapter card or additional software drivers. |
| SVGA | Most PC displays sold today incorporate the super video graphics array (SVGA) standard. This system can support a palette of up to 16,000,000 colors, although the amount of video memory in a particular computer might limit the actual number of displayed colors to something less than that. |

Setup Information Checklist

Please complete the form below to ensure you have all the necessary information to successfully set up your NetXpress XL.

Citrix server name(s):

Unique Client Name:

Desired Video Resolution:

640X480X _____
 800x600X _____
 1024X768X _____
 1152X864X _____
 1280X1024X _____
 1600X1200X _____

Color Palette:

16
 256

Font Size:

Small
 Large

Type of Connection:

LAN

| | |
|--|---|
| <input type="checkbox"/> Use DHCP <small>(Server assigned IP Address)</small> | <input type="checkbox"/> Server assigned DNS Address |
| <input type="checkbox"/> Wireless | <input type="checkbox"/> Specify domain name server addresses |
| <input type="checkbox"/> Specify an IP address | Primary DNS: _____ |
| IP address: _____ | Secondary DNS: _____ |
| Subnet: _____ | Host Name: _____ |
| Gateway: _____ | Domain Name: _____ |

PPP

| | |
|---|---|
| Phone Number: () _____ | Username: _____ |
| PAP/CHAP Username: _____ | |
| <input type="checkbox"/> Use DHCP (server assigned IP address) | <input type="checkbox"/> Server assigned DNS Address |
| <input type="checkbox"/> Specify and IP address | <input type="checkbox"/> Specify domain name server addresses: |
| IP address: _____ | DNS1: _____ |
| | DNS2: _____ |
| | DNS3: _____ |
| Modem Type: _____ | COM Port: _____ |
| Dialing Method: <input type="checkbox"/> Touch Tone <input type="checkbox"/> Pulse | Speed: _____ |
| VJ Compression Information: _____ _____ | Flow Control: <input type="checkbox"/> Hardware <input type="checkbox"/> Software |

Understanding Start Menu Items

Although your NetXpress XL is designed to operate in a Windows 3.11™ environment, it utilizes a Task bar equipped with a Start button that is similar to newer GUI-based operating systems. Five menu items are displayed when you click the Start button:

- Settings
- Version
- Programs
- Help
- Shutdown

Version

TO VIEW THE IMAGE AND RAPPORT SERVICE VERSIONS:

- 1 Click **Start**, then click **Versions**.

The About NetXpress Taskbar dialog box is displayed.



About NetXpress Taskbar

- 2 To see details, click **Details**.

The Details screen is displayed.



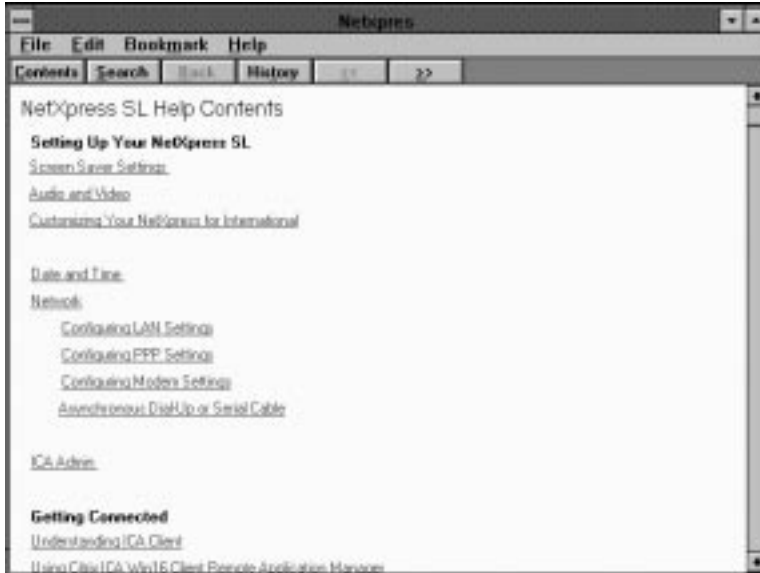
Details

- 3 Click **OK** when you finish viewing details.

Help

TO ACCESS NETXPRESS HELP:

- 1 Click **Start**, then click **Help** on the Start menu.
NetXpress XL Help Contents is displayed.



NetXpress XL Help Contents

Click on any topic for help.

Programs Menu

TO ACCESS THE PROGRAMS MENU:

On the task bar, click **Start**, then click **Programs**.
The Programs menu is displayed.



Programs menu

Note: The only standard applications available in the Programs menu are ICA Client and Terminal Server Client.

Settings Menu

You can configure system settings and gain access to the Network through the Settings menu. Nine menu items are displayed after clicking the Settings button:

- Computer Name
- Date-Time
- Display Settings
- Mouse
- Keyboard
- Printers
- International
- Network Setting
- Screen Saver

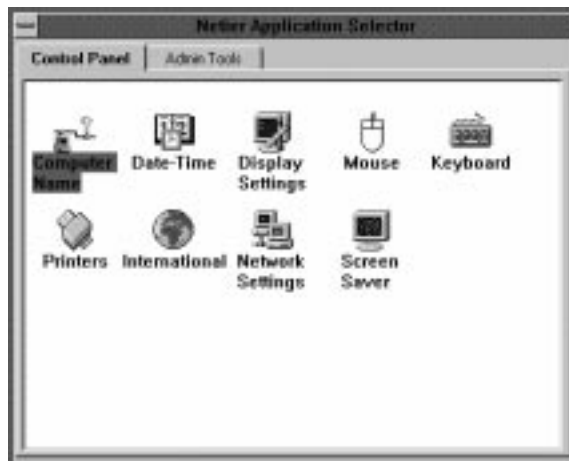
TO ACCESS THE SETTINGS MENU:

- 1 On the task bar, click **Start**, then click **Settings**.
The Password Required dialog box is displayed.



Password Required

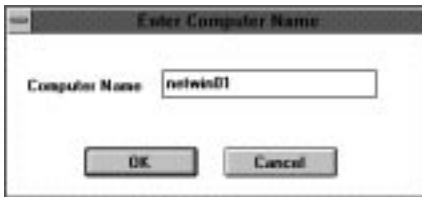
- 2 Type your password, then click **OK**.
The Netier Application Selector is displayed.



Netier Application Selector

TO ACCESS THE COMPUTER NAME SETTING:

- 1 Double-click the **Computer Name** icon in the Netier Application Selector.
The Enter Computer Name dialog box is displayed.



Enter Computer Name

- 2 Type the new computer name.
The Reboot dialog box is displayed.



Reboot?

- 3 If you want to reboot immediately, click **Yes**.
Note: The computer name change will not take effect until the client has been rebooted.

TO ADJUST THE DATE AND TIME SETTINGS:

- 1 Double-click the Date-Time icon in the Netier Application Selector.
The Date/Time Settings dialog box is displayed.

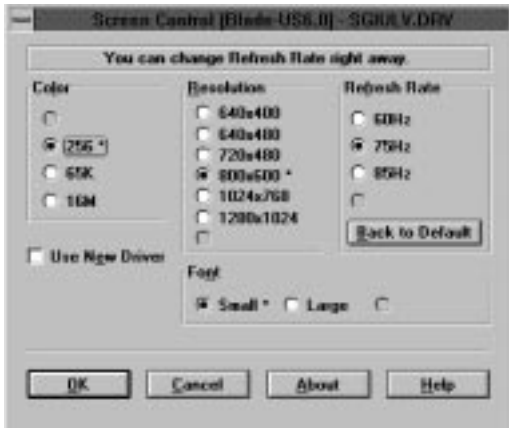


Date/Time Settings

- 2 Adjust the date and time settings as necessary, then click **OK**.

TO ADJUST THE DISPLAY SETTINGS:

- 1 Click the **Display Settings** icon in the Netier Application Selector.
The Screen Control dialog box is displayed.



Screen Control

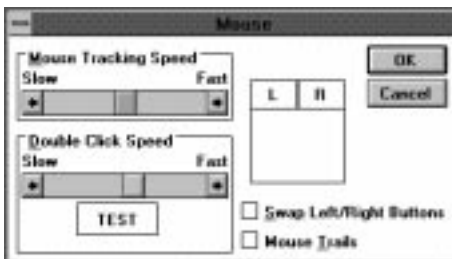
- 2 Adjust the settings as necessary.

| | If... | then... |
|--|---|--|
| | you adjust the settings for Color, Resolution, Font or Use New Driver | click OK . Note: The changes will not take effect until you click OK . |
| | you adjust the Refresh Rate | the Screen Control dialog box is displayed. Click OK . The new refresh rate takes effect. |

- 3 When finished viewing or adjusting settings, click **OK**.

TO ADJUST THE MOUSE SETTINGS:

- 1 In the Netier Application Selector, double-click the **Mouse** icon.
The Mouse dialog box is displayed.

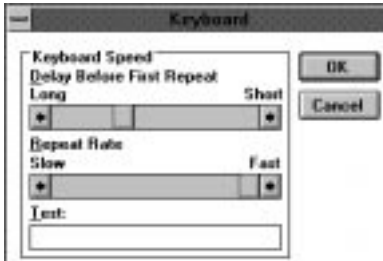


Mouse

- 2 Adjust mouse settings as needed.
- 3 When finished adjusting the mouse settings, click **OK**.

TO ADJUST THE KEYBOARD SETTINGS:

- 1 In the Netier Application Selector, double-click the **Keyboard** icon.
The Keyboard dialog box is displayed.

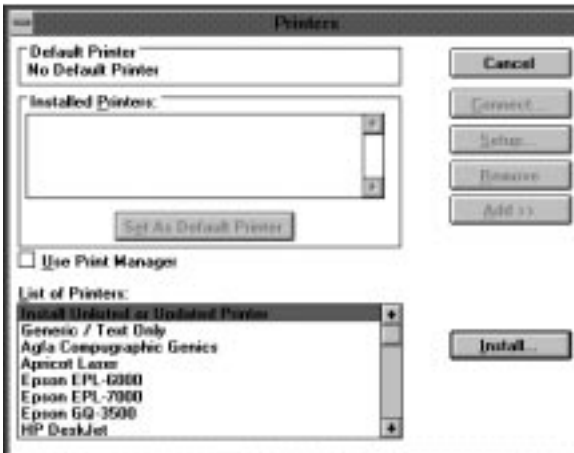


Keyboard

- 2 Adjust keyboard settings as necessary, then click **OK**.

TO INSTALL A PRINTER:

- 1 In the Netier Application Selector, double-click the **Printer** icon.
The Printers dialog box is displayed.



Printers

- Note:** If a list of printers is not displayed at the bottom of the Printers dialog box, click **Add>>**.
- 2 In the List of Printers: list box, click the printer you want to install, then click **Install...**
The selected printer is displayed in the Installed Printers: list box.
 - 3 To set the installed printer as the default printer, select the installed printer, then click **Set As Default Printer**.

TO REMOVE AN INSTALLED PRINTER:

- 1 In the Installed Printers: list box, click the printer to be removed, then click **Remove**.
A confirmation box appears.

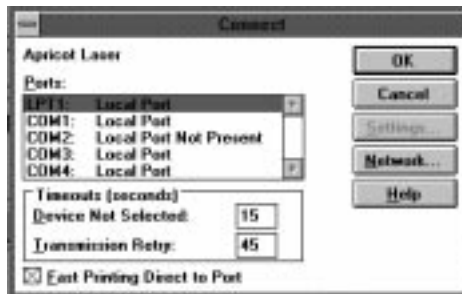


confirmation box

- 2 Click **Yes** to remove the printer.

TO CONNECT A PRINTER TO THE NETWORK:

- 1 Click the installed printer you want to connect to the network, then click **Connect...**
The Connect dialog box is displayed.



Connect

- 2 In the Ports: list box, click the port you want.
- 3 Adjust the timeout settings, if necessary.
- 4 Click **Network**.
The Connect Network Printer dialog box is displayed.



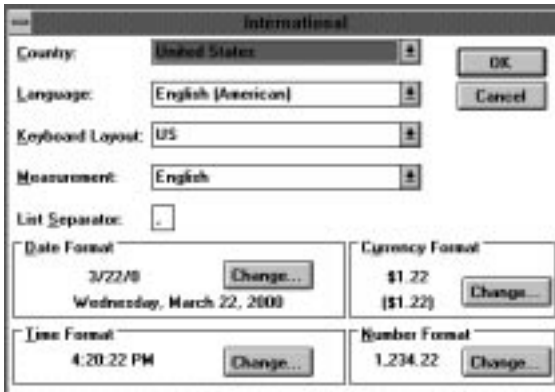
Connect Network Printer

- 5 Select the Device Name and Path.
- 6 In the Show Shared Printers on: list box, select the drive you want.

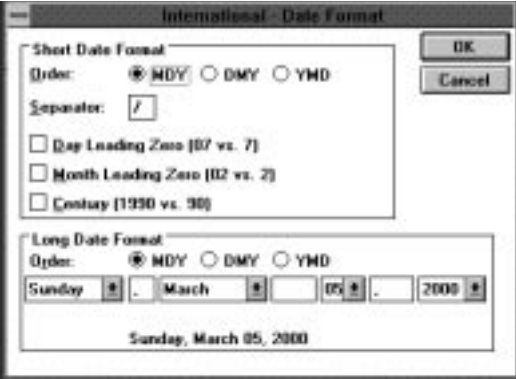
- 7 When finished configuring the network connection, click **OK**.
The Connect dialog box is displayed.
- 8 Click **OK**.
The Printers dialog box is displayed.
- 9 When finished setting up printers, click **Cancel**.



TO ADJUST INTERNATIONAL SETTINGS:

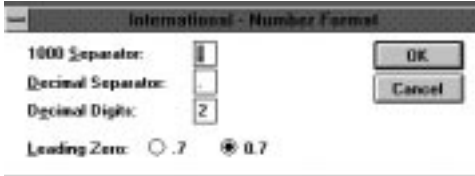
- 1 In the Netier Application Selector, double-click the **International** icon.
The International dialog box is displayed.



International

| 2 | To change... | do this... |
|---|--|--|
| | Country, Language, Keyboard Layout, or Measurement | in the appropriate field, click the down arrow, then choose the setting you want. |
| | List Separator | in the List Separator field, type the punctuation mark you want to use as a list separator. |
| | Date Format | <p>1 in the Date Format box, click Change...</p> <p><i>The International - Date Format dialog box is displayed.</i></p>  <p><i>International - Date Format</i></p> <p>In the Short Date Format box:</p> <ol style="list-style-type: none"> 2 To change the order of the month, day and year, in the Order: field, click the order you want. 3 To change the punctuation that separates the month, day and year, in the Separator: field, type the punctuation you want. 4 To make single-digit days and months two digit (for example, 01/03 instead of 1/3), click Day Leading Zero and Month Leading Zero. 5 To make the year four digits instead of two, click Century. <p>In the Long Date Format box:</p> <ol style="list-style-type: none"> 6 To change the order of the month, day and year, in the Order: field, click the order you want. 7 Click the down arrows to choose the format you want for each component of the long date. 8 In the punctuation fields, type the punctuation you want to use to separate the components of the date. 9 When you are finished changing the date format, click OK. <p><i>The International dialog box is displayed.</i></p> |

| | | |
|--|------------------------|---|
| | <p>Currency Format</p> | <ol style="list-style-type: none"> In Currency Format box, click Change... <i>The International - Currency Format dialog box is displayed.</i>  <p><i>International - Currency Format</i></p> <ol style="list-style-type: none"> To change the placement of the currency symbol, in the Symbol Placement field, click the down arrow, then choose the placement you want. To change the way a negative number is represented, in the Negative field, click the down arrow and choose the representation you want. To change the currency symbol, in the Symbol field, type the currency symbol you want. To change the number of digits that appear after a decimal point, in the Decimal Digits field, type the number of digits you want. When you are finished changing the currency format, click OK. <i>The International dialog box is displayed.</i> |
| | <p>Time Format</p> | <ol style="list-style-type: none"> In the Time Format box, click Change... <i>The International - Time Format dialog box is displayed.</i>  <p><i>International - Time Format</i></p> <ol style="list-style-type: none"> Choose 12-hour or 24-hour format. In the Separator field, type the punctuation you want as the separator between the hour and minutes. In the Leading Zero: field, select the format you want. When you are finished changing the time format, click OK. <i>The International dialog box is displayed.</i> |

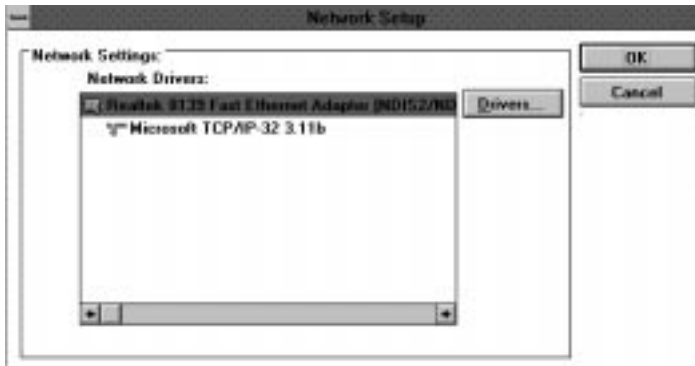
| | | |
|--|----------------------|--|
| | <p>Number Format</p> | <p>1 In the Number Format box, click Change... <i>The International - Number Format dialog is displayed.</i></p>  <p><i>Number Format</i></p> <p>2 Make any changes to the number format settings, then click OK.</p> |
|--|----------------------|--|

3 When finished adjusting the International settings, click **OK**.

TO CHANGE NETWORK SETTINGS:

1 In the Netier Application Selector, double-click the **Network Settings** icon.

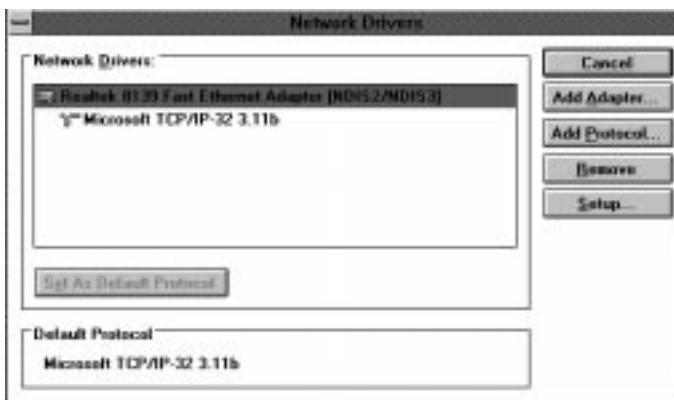
The Network Setup dialog box is displayed.



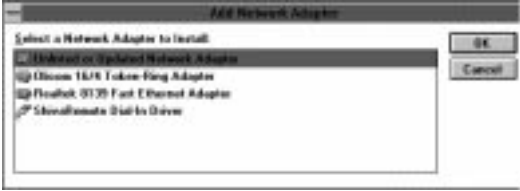

Network Setup

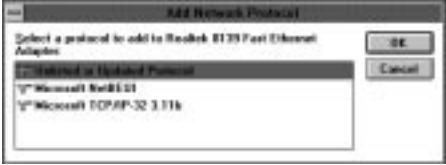

2 To add or remove adapters or protocols, click **Drivers**.

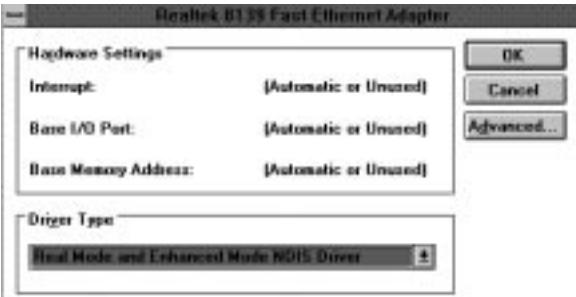

The Network Drivers dialog box is displayed.



Network Drivers

| 3 | To... | Do this... |
|---|-------------------|--|
| | add an adapter | <p>1 Click Add Adapter...</p> <p><i>The Add Network Adapter dialog box is displayed.</i></p>  <p><i>Add Network Adapter</i></p> <p>2 Select the adapter you want to add, then click OK.</p> <p><i>The Network Drivers dialog box is displayed, and the selected adapter is displayed in the Network Drivers list box.</i></p> <p>Note: Be sure to add the TCP/IP protocol to the adapter (see the add a protocol section later in this table) and make it the default protocol.</p> |
| | remove an adapter | <p>Caution: Always add the new adapter before removing the old adapter.</p> <p>1 Click the adapter to be removed, then click Remove.</p> <p><i>The Network Setup dialog box is displayed.</i></p>  <p><i>Network Setup</i></p> <p>2 Click Yes to remove the selected adapter.</p> |

| | | |
|--|--------------------------|--|
| | <p>add a protocol</p> | <ol style="list-style-type: none"> 1 Select the adapter to which you want to add the protocol. 2 Click Add Protocol... <i>The Add Network Protocol dialog box is displayed.</i>  <p><i>Add Network Protocol</i></p> <ol style="list-style-type: none"> 3 Select the protocol you want to add, then click OK. <i>The Network Drivers dialog box is displayed, and the selected protocol is displayed in the Network Drivers list box.</i> 4 Click the Set As Default Protocol button. Note: The standard image only supports TCP/IP. |
| | <p>remove a protocol</p> | <ol style="list-style-type: none"> 1 Click the protocol to be removed, then click Remove. <i>The Network Setup dialog box is displayed.</i>  <p><i>Network Setup</i></p> <ol style="list-style-type: none"> 2 Click Yes to remove the selected protocol. |

| | | |
|--|--------------------------------|--|
| | <p>change a driver's setup</p> | <ol style="list-style-type: none"> <p>In the Network Drivers window, click the driver you want, then click Setup...</p> <p><i>A setup dialog box is displayed.</i></p>  <p><i>setup dialog box</i></p> <p>To change the driver type, in the Driver Type field, click the down arrow and select the driver type you want.</p> <p>To change other settings, click Advanced...</p> <p><i>A setup dialog box is displayed.</i></p>  <p><i>setup dialog box</i></p> <p>Make any necessary changes, then click OK.</p> <p>Click OK again.</p> <p><i>The Network Drivers dialog box is displayed.</i></p> <p>When finished configuring drivers, click Close.</p> <p><i>The Network Setup dialog box is displayed.</i></p> <p>When finished changing network settings, click OK.</p> |
|--|--------------------------------|--|

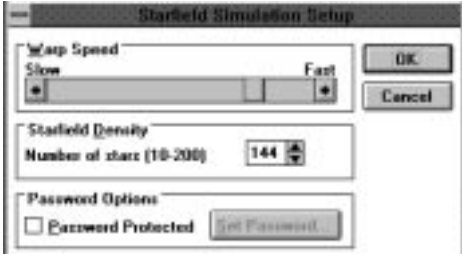
TO CHANGE THE SCREEN SAVER SETTINGS:

- 1 In the Netier Application Selector, double-click the Screen Saver icon.

The Screen Saver dialog box is displayed.



Screen Saver

| 2 | If... | then... |
|---|---|--|
| | you do not want a screen saver, | click the down arrow and select none . |
| | you want to adjust the wait time, | in the Wait: field, type the number of minutes you want. |
| | you want to adjust the screen saver settings, | <ol style="list-style-type: none"> 1 Click Settings... <i>The Starfield Simulation Setup dialog box is displayed.</i>  <p><i>Starfield Simulation Setup</i></p> <ol style="list-style-type: none"> 2 Adjust the settings as desired, then click OK. |

SHUTDOWN

- 1 On the Start menu, click **Shutdown**.
The Shutdown confirmation box is displayed.



Shutdown

| 2 | If... | then... |
|---|-------------------------------------|--|
| | you want to shutdown your computer, | click Shutdown , then click OK . |
| | you want to restart your computer, | click Restart , then click OK . |
| | you want to cancel shutdown, | click Cancel . |

Caution: A screen will notify you when it is safe to turn off your NetXpress XL.

Citrix ICA Client

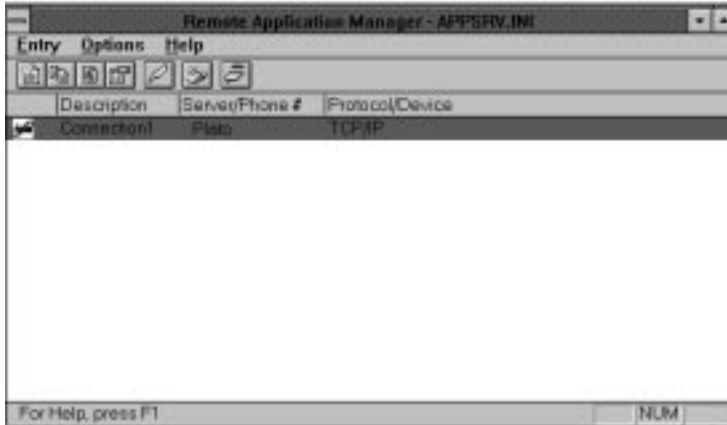
Connecting to a Session

Note: The Clients must be configured with at least one NetXpress user entry before connection to the Citrix ICA or MetaFrame server is possible.

TO BEGIN RUNNING ICA CLIENT:

- 1 Click **Start, Programs, ICA Client.**

The Remote Application Manager is displayed.



Remote Applications Manager (ICA Client)

The Citrix ICA Client Remote Application Manager Main menu contains a list of the configured remote applications you can use to establish a connection to a Citrix server. This menu also contains several toolbar buttons and pull-down menus. The following sections describe how to use the Citrix ICA Client Remote Application Manager main menu.

TO CONNECT TO A PREVIOUSLY DEFINED REMOTE APPLICATION:

- 1 Double-click the desired remote application entry.

| 2 | If... | then... |
|---|---|--|
| | the remote application entry contains a valid user name and password, | the ICA Client logs in as that user name. |
| | no user name and password are present in the server entry, | the server logon screen appears. Log on to the Citrix server as usual. When you log out of the Citrix server, you are returned to Windows. |

Logging Off or Disconnecting from ICA or MetaFrame

Citrix servers support two types of connection termination—Log Off or Disconnect.

- Logging off ends the user's session.
- Disconnecting leaves a user's session executing on the server.

If you log off, your session is ended. If any tasks are executing when you log off, they will stop when you log off. Be sure to save your work before logging off.

If you disconnect from a session, you can reconnect to the disconnected session and resume any tasks left executing on the server. For example, a user can connect to a Citrix server and execute an application that requires an extended period of time to complete a task. After starting the task, the user can disconnect the session. The user can later reconnect to the session to retrieve the results of the operation.

TO LOG OFF FROM A CITRIX SERVER CONNECTION DURING AN ACTIVE SESSION:

Caution: Logging off the Citrix server automatically terminates the active connection and hangs up the modem if a modem is in use.

| 1 | If you are logging off from a... | then... |
|---|----------------------------------|--|
| | ICA server, | <ol style="list-style-type: none"> 1 click File in <i>Program Manager</i> in your active session and then click Logoff. 2 Click OK to the confirmation message. |
| | MetaFrame server, | <ol style="list-style-type: none"> 1 click Start in your active session and then click Logoff. 2 Click OK to the confirmation message. |

TO DISCONNECT FROM A CITRIX SERVER CONNECTION DURING AN ACTIVE SESSION:

| 1 | If you are disconnecting from a... | then... |
|---|------------------------------------|---|
| | ICA server, | <ol style="list-style-type: none"> 1 click Start in your active session and then click Disconnect. 2 Click OK. |
| | MetaFrame server, | <ol style="list-style-type: none"> 1 click Start in your active session and then click Disconnect. 2 Click OK. |

Reconnecting to ICA or MetaFrame

TO RECONNECT TO A DISCONNECTED SESSION:

- 1 In the Remote Application Manager Main menu, double-click the Citrix server entry that you used to start your session previously.

The ICA Win16 Client automatically detects the session left running in a disconnected state on the Citrix server and reconnects to it.

Note: To reconnect to a disconnected session, the Citrix server must be configured to allow resumption of disconnected sessions.

To begin Citrix configuration, refer to Chapter Seven (Using ICA Win 16 Client) in the PC Client Users Guide delivered with your ICA or MetaFrame server software. Additionally, please refer to the ICA Appendix on page * for a description of modifications that have been made for the NetXpress XL to the standard Citrix Remote Application Manager.

Using the Remote Application Manager

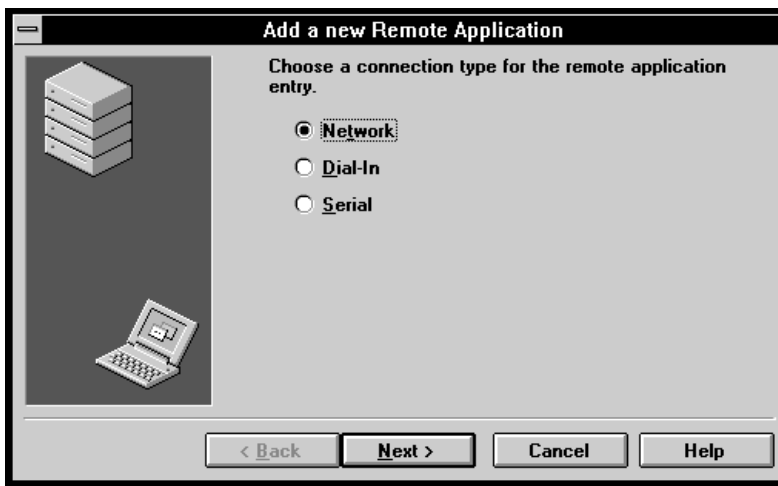
Adding Remote Application Entries

ADDING A NETWORK REMOTE APPLICATION

The Remote Application Wizard guides you through the steps required to configure a Network remote application. The procedure is slightly different for adding Dial-In or Serial connections.

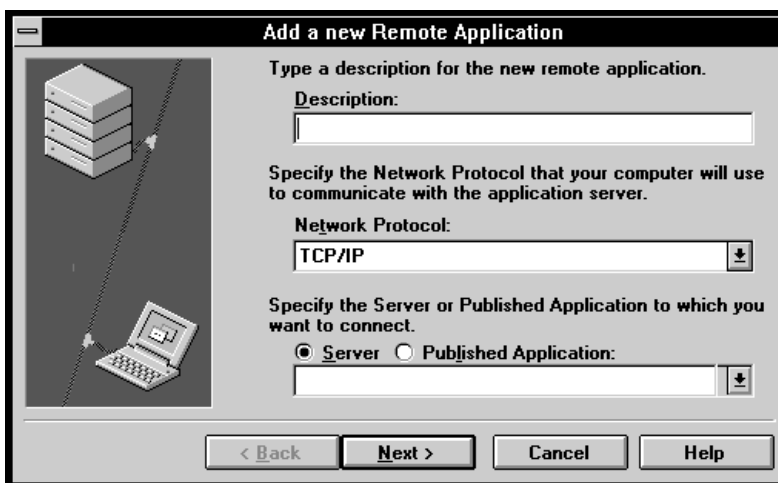
TO ADD A CONNECTION TO A SERVER:

- 1 In the Remote Application Manager main window, select **New** from the Entry menu.
The first screen of the Add a new Remote Application wizard is displayed.



Add a new Remote Application wizard

- 2 Select **Network**, then click **Next**.
The next screen of the Add a new Remote Application wizard is displayed.



Add a new Remote Application wizard

- 3 Type a description for the new remote application in the Description: field. (This description also appears in the title bar of the ICA client window.)

Note: The description cannot contain any of the following characters: \ / : * ? < > | , . () []

- In the Network Protocol: field, select the network protocol your computer uses to communicate with the application server.

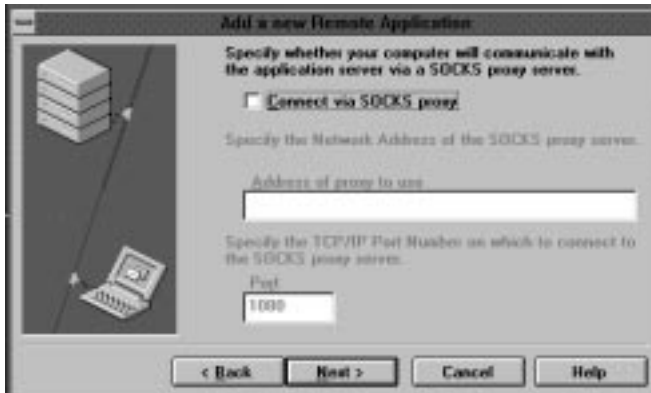
Note: The protocol you select must be installed on your computer and on the server to which you are connecting.

- Select **Server**, then click the down-arrow to choose the Server to which you want to connect.

Note: If the list box is empty, check your DNS specification in the Network Settings to ensure name resolution is properly configured. If the Citrix server is not listed or name resolution is not available, you must type the IP address for the Citrix server in the list field box.

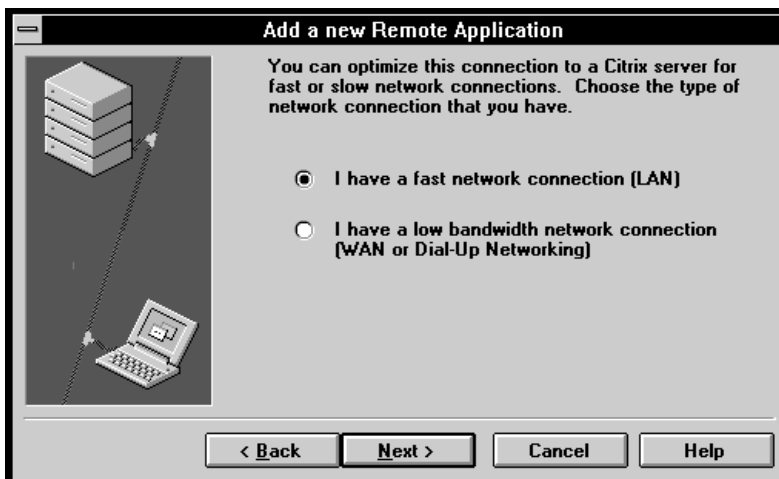
- Click **Next**.

The next screen of the Add a new Remote Application wizard is displayed.



The next screen of the Add a new Remote Application wizard is displayed.

- If your computer uses a SOCKS proxy server, select **Connect via SOCKS proxy**, then type the proxy address and the TCP/IP port number. Otherwise, leave these fields blank.

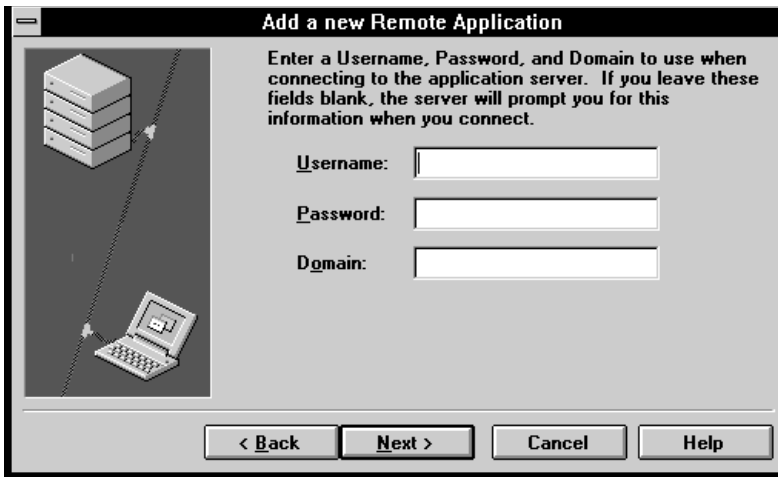


Add a new Remote Application wizard

| 8 | If ... | then ... |
|---|---|---|
| | you are using a LAN connection, | select I have a fast network connection (LAN) . |
| | you using a WAN or Dial-Up Networking connection, | select I have a low bandwidth network connection (WAN or Dial-Up Networking) . |

9 Click Next.

The next screen of the Add a new Remote Application wizard is displayed.

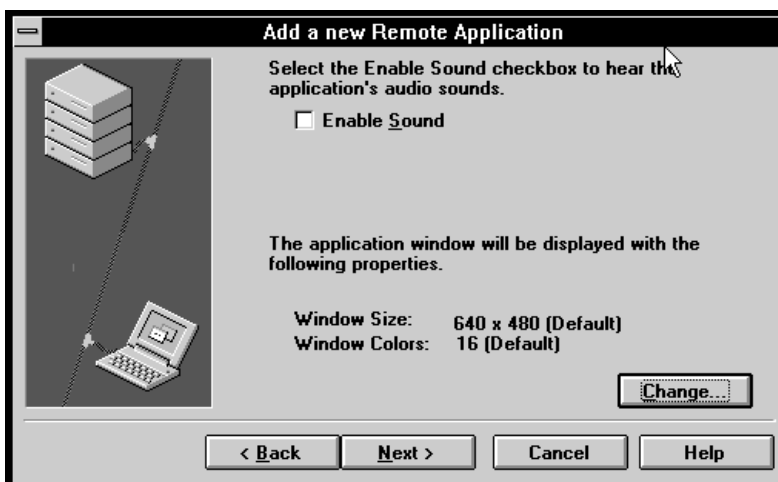


Add a new Remote Application wizard


| 0 | If you... | then... |
|---|--|---|
| | enter values for Username, Password, and Domain, | the user will be automatically logged on to the Citrix server. |
| | leave these fields blank, | the Citrix server prompts for this information when the user connect. |

11 Click Next.

The next screen of the Add a new Remote Application wizard is displayed.



Add a new Remote Application wizard

| 12 | If... | then... |
|----|---|---|
| | you are connecting to a MetaFrame server, | click Enable Sound . |
| | you want to change the window properties, | <p>1 Click Change.</p> <p><i>The Window Properties dialog box is displayed.</i></p>  <p><i>Window Properties</i></p> <p>2 Select the window size and color you want, then click OK.</p> <p>Caution: The window size you select must be less than or equal to the screen resolution of the client computer. If you specify 256 colors, your display adapter must support 256 colors at the specified screen resolution and Windows must be configured to use a 256-color display mode. Use Display Settings in the Control Panel to configure 256-color display mode.</p> <p>Note: System performance is improved if 16 colors is selected.</p> <p>3 Click OK.</p> |

13 Click Next.

The next screen of the Add a new Remote Application wizard is displayed.



Add a new Remote Application wizard

| 14 | If... | then... |
|----|---|--|
| | you want to specify the ICA Connection to open a particular application only, | type the filename of the application to run in the Application field, or click the Browse button to find the application you want. |
| | you want the user to have access to the Windows NT desktop, | leave these fields blank. |

The next screen of the Add a new Remote Application wizard is displayed.



Add a new Remote Application wizard

- 15 To change the icon of your Remote Application, click **Change Icon...**

The Change Icon dialog box is displayed.



Add a new Remote Application wizard

- 16 Select the desired icon in the Current Icon: field.
17 Click **OK**.
18 Click **Next**.

The Finished dialog box is displayed.

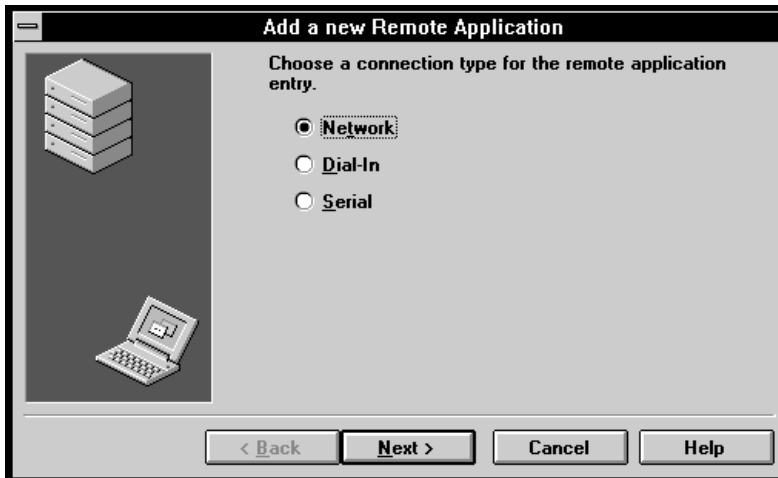


Add a new Remote Application wizard

- 19 Click **Finish** to save the remote application, **Back** to modify the remote application, or **Cancel** to discard the remote application.

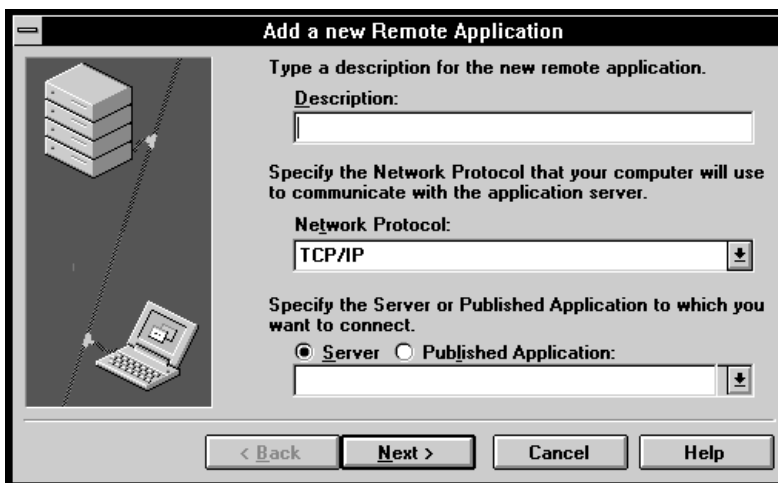
TO ADD A CONNECTION TO AN APPLICATION:

- 1 In the Remote Application Manager main window, select **New** from the Entry menu.
The first screen of the Add a new Remote Application wizard is displayed.



Add a new Remote Application wizard

- 2 Select **Network**, then click **Next**.
The next screen of the Add a new Remote Application wizard is displayed.



Add a new Remote Application wizard

- 3 Type a description for the new remote application in the Description: field. (This description also appears in the title bar of the ICA client window.)
Note: The description cannot contain any of the following characters: \ / : * ? < > | , . () []
- 4 In the Network Protocol: field, select the network protocol your computer uses to communicate with the application server.
Note: The protocol you select must be installed on your computer and on the server to which you are connecting.
- 5 Select **Server**, then click the down-arrow to choose the Server to which you want to connect.
Note: If the list box is empty, check your DNS specification in the Network Settings to ensure name resolution is properly configured. If the Citrix server is not listed or name resolution is not available, you must type the IP address for the Citrix server in the list field box.

6 Click Next.

The next screen of the Add a new Remote Application wizard is displayed.

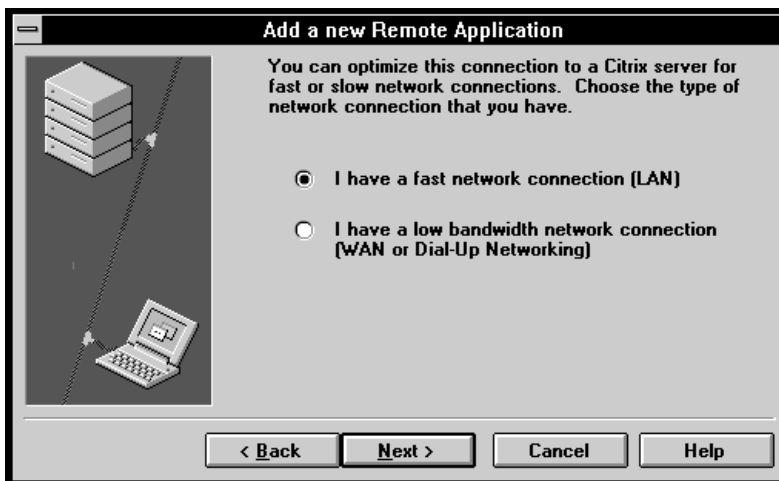


The next screen of the Add a new Remote Application wizard is displayed.

7 If your computer uses a SOCKS proxy server, select Connect via SOCKS proxy, then type the proxy address and the TCP/IP port number. Otherwise, leave these fields blank.

8 Click Next.

The next screen of the Add a new Remote Application wizard is displayed.

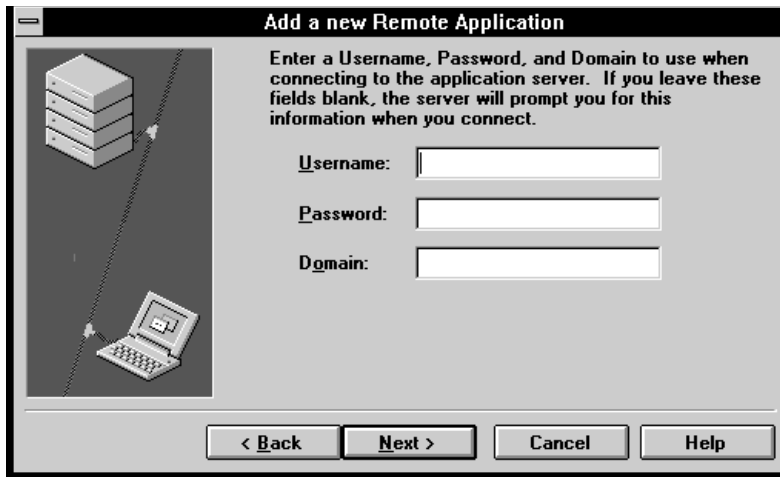


Add a new Remote Application wizard

| 9 If ... | then ... |
|---|---|
| you are using a LAN connection, | select I have a fast network connection (LAN) . |
| you using a WAN or Dial-Up Networking connection, | select I have a low bandwidth network connection (WAN or Dial-Up Networking) . |

10 Click Next.

The next screen of the Add a new Remote Application wizard is displayed.

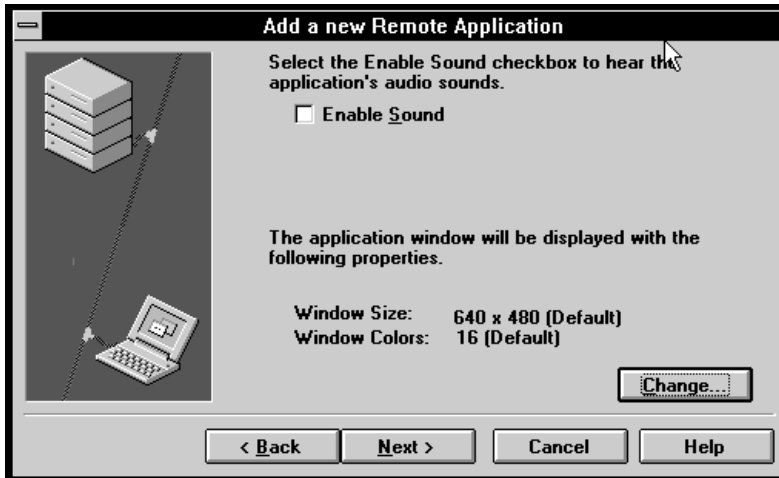


Add a new Remote Application wizard

11 Click **Next**.

| 12 | If you... | then... |
|----|--|---|
| | enter values for Username, Password, and Domain, | the user will be automatically logged on to the Citrix server. |
| | leave these fields blank, | the Citrix server prompts for this information when the user connect. |

The next screen of the Add a new Remote Application wizard is displayed.

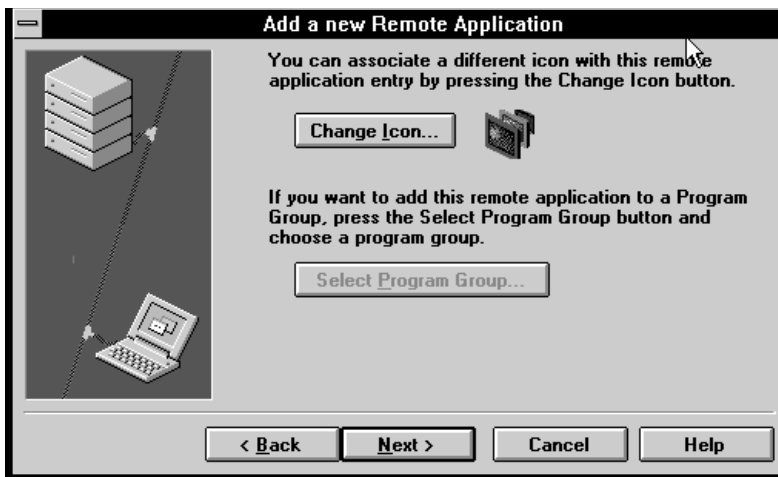


Add a new Remote Application wizard

| 13 | If... | then... |
|----|---|--|
| | you are connecting to a MetaFrame server, | click Enable Sound . |
| | you want to change the window properties, | <p>1 Click Change. <i>The Window Properties dialog box is displayed.</i></p> <p><i>Window Properties</i></p> <p>2 Select the window size and color you want, then click OK.</p> <p>Caution: The window size you select must be less than or equal to the screen resolution of the client computer. If you specify 256 colors, your display adapter must support 256 colors at the specified screen resolution and Windows must be configured to use a 256-color display mode. Use Display Settings in the Control Panel to configure 256-color display mode.</p> <p>Note: System performance is improved if 16 colors is selected.</p> <p>3 Click OK.</p> |

12 Click Next.

The next screen of the Add a new Remote Application wizard is displayed.



Add a new Remote Application wizard

13 To change the icon of your Remote Application, click Change Icon...

The Change Icon dialog box is displayed.



Add a new Remote Application wizard

14 Select the desired icon in the Current Icon: field.**15 Click OK.**

16 Click Next.

The Finished dialog box is displayed.



Add a new Remote Application wizard

17 Click Finish to save the remote application, **Back** to modify the remote application, or **Cancel** to discard the remote application.

ADDING A DIAL-IN REMOTE APPLICATION

The **Remote Application Wizard** guides you through the steps required to configure a Dial-In remote application. The procedure is slightly different from adding Network or Serial connections.

TO ADD A DIAL-IN REMOTE APPLICATION:

- 1 Select **New** from the **Entry** menu.

The first Add a new Remote Application screen is displayed.



Add a new Remote Application

- 2 Click **Dial-In**.

Note: If no modems are configured for use with the ICA Win16 Client, the Install a New ICA Client Modem dialog box appears. See “To install a new ICA Client modem:” on page 59 for instructions on how to install a modem for use with the ICA Win16 Client.

- 3 Click **Next**.

The next screen of the Add a new Remote Application wizard is displayed.



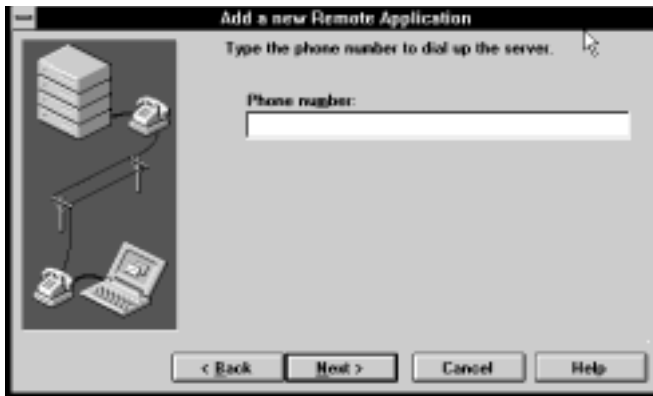
Add a new Remote Application

- 4 Enter a description for the remote application.
- 5 Select a previously configured modem from the Modem pull-down list.

Note: See the section “To change the properties of a modem:” on page 62 for information on how to change modem properties.

6 Click Next.

The next screen of the Add a new Remote Application wizard is displayed.

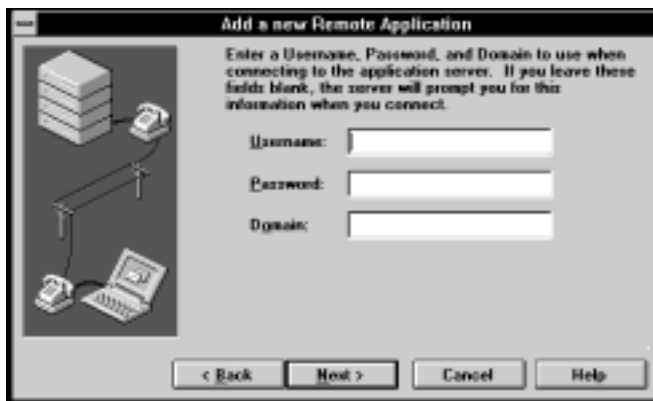


Add a new Remote Application

7 In the Phone Number field, enter the phone number of the Citrix server.

8 Click Next.

The next screen of the Add a new Remote Application wizard is displayed.



Add a new Remote Application

| 9 | If you... | then... |
|---|--|---|
| | enter values for Username, Password, and Domain, | the user will be automatically logged on to the Citrix server. |
| | leave these fields blank, | the Citrix server prompts for this information when the user connect. |

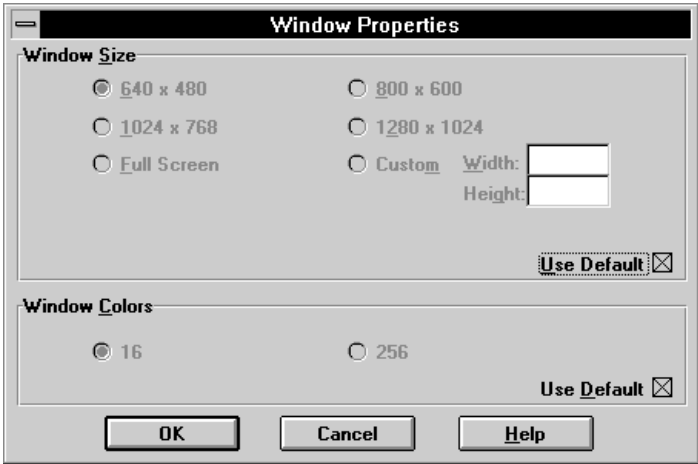
10 Click Next.

The next screen of the Add a new Remote Application wizard is displayed.



Add a new Remote Application

11 If you are connecting to the MetaFrame server, click the **Enable Sound** checkbox.

| 12 | If... | then... |
|----|--|---|
| | <p>you want to change the window properties,</p> | <p>1 Click Change. <i>The Window Properties dialog box is displayed.</i></p>  <p><i>Window Properties</i></p> <p>2 Make the changes to window size and/or color, then click OK.</p> <p>Caution: The window size you select must be less than or equal to the screen resolution of the client computer. If you specify 256 colors, your display adapter must support 256 colors at the specified screen resolution and Windows must be configured to use a 256-color display mode. Use Audio & Video in the Settings menu to configure 256-color display mode.</p> <p>Note: System performance is improved if 16 colors is selected.</p> <p>3 Click OK. <i>ICA Admin returns to the Add a new Remote Application wizard.</i></p> |
| | <p>you want to keep the window default settings,</p> | <p>click Cancel.</p> |

13 Click Next.

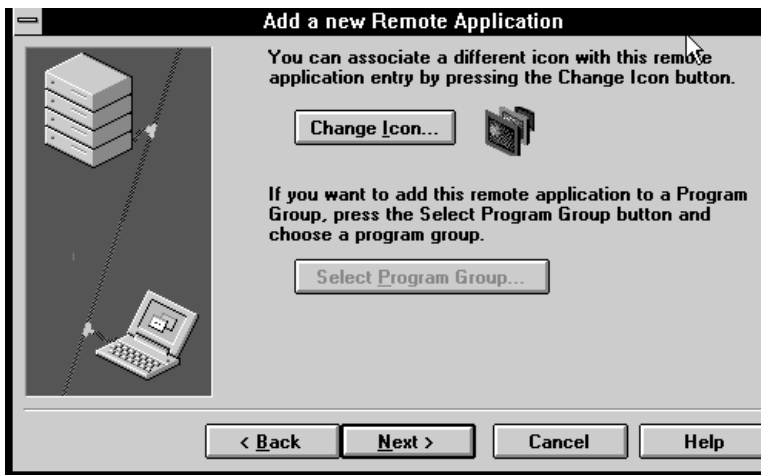
The next screen of the Add a new Remote Application wizard is displayed.



Add a new Remote Application

| 14 | If... | then... |
|----|--|---|
| | you want to connect a specific application after logon to the Citrix server, | <ol style="list-style-type: none"> 1 In the Application: field, specify the application to run. Note: The Citrix server must have access to the selected application. 2 In the Working Directory: field, enter the drive and path of the working directory you wish to use with the application specified in the Application: field. 3 Click Next. |
| | you want to run a Windows NT desktop after logon to the Citrix server, | leave both fields blank and click Next . |

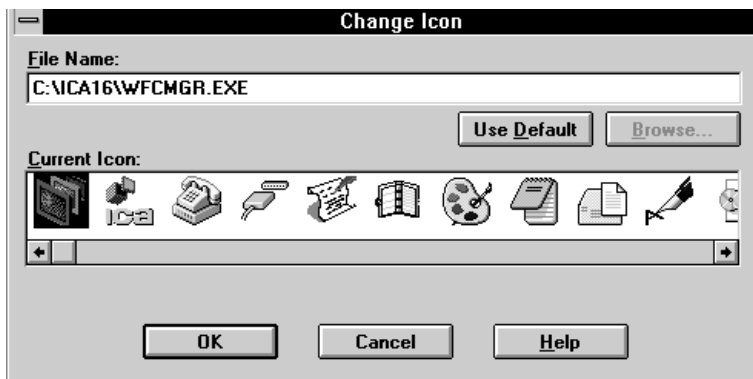
The next screen of the Add a new Remote Application wizard is displayed.



Change Remote Application Icon

15 To change the icon of your Remote Application, click **Change Icon...**

The Change Icon dialog box is displayed.

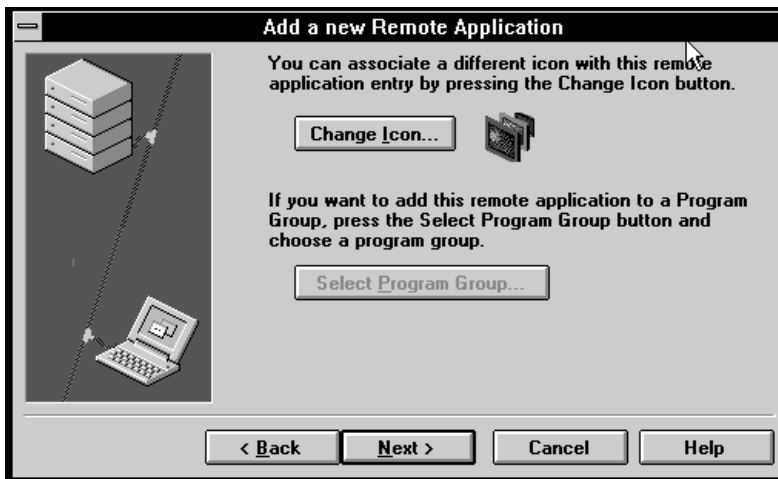


Change Icon

16 Select the desired icon in the Current Icon: field.

17 Click **OK**.

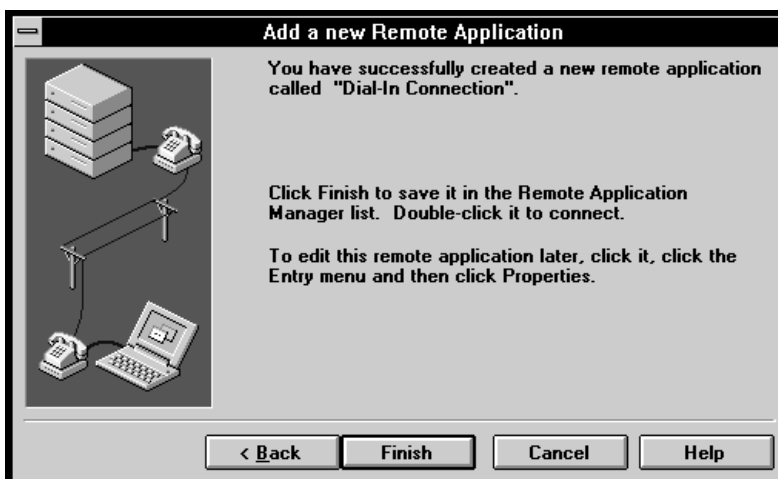
ICA returns to Add a new Remote Application wizard.



Add a new Remote Application

18 Click **Next**.

The Finished dialog box is displayed.



Finished Creating Remote Application

19 Choose **Finish** to save the remote application, **Back** to modify the remote application, or **Cancel** to discard the remote application.

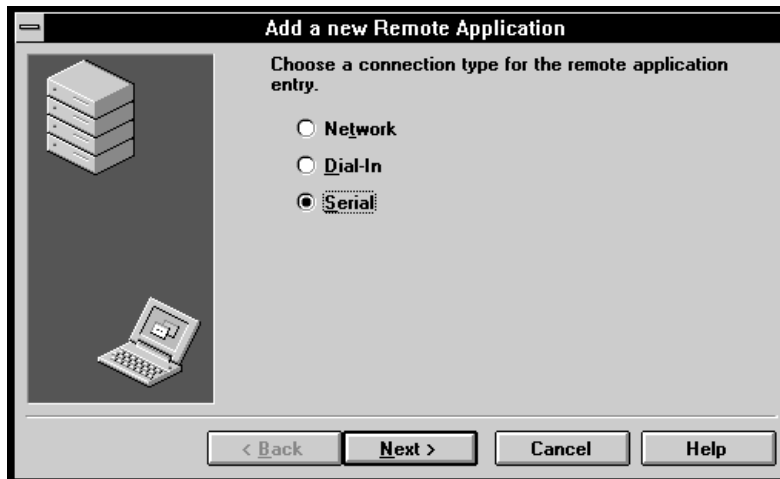
ADDING A SERIAL NULL MODEM REMOTE APPLICATION

The **Remote Application Wizard** guides you through the steps required to configure a Serial Null Modem remote application. The procedure is slightly different from adding Network or Dial-In connections.

TO ADD A SERIAL NULL MODEM REMOTE APPLICATION:

- 1 Select **New** from the Entry menu.

The first screen of the Add a new Remote Application wizard is displayed.



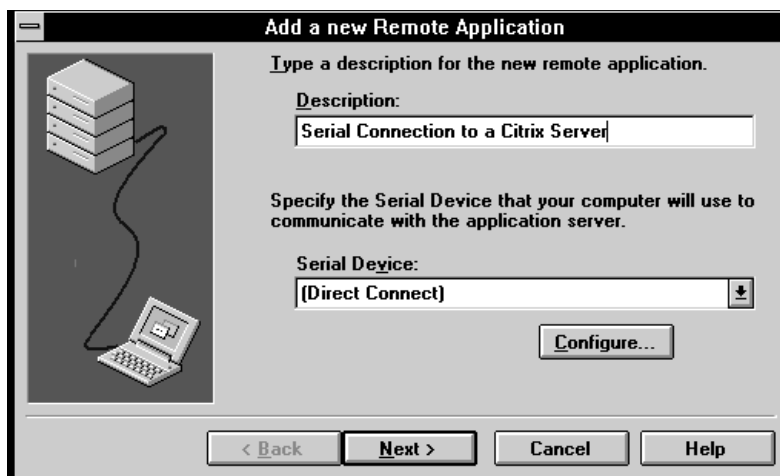
Add a new Remote Application

- 2 Click **Serial**.

Note: If no serial devices are configured for use with the ICA Win16 Client, the Install a New Serial Device dialog box appears. See “To install a new serial device:” on page 68 for instructions on how to install a serial device for use with the ICA Win16 Client.

- 3 Follow steps

The first screen of the Add a new Remote Application wizard is displayed.



Add a new Remote Application

- 4 Enter a description for the remote application; for example, Serial Connection to a Citrix Server.
- 5 Select a previously configured device name from the **Serial Device** pull-down list or choose **Configure** to configure a device entry. See the section “Configuring Serial Device Properties” on page 70 for information on how to change direct device properties.

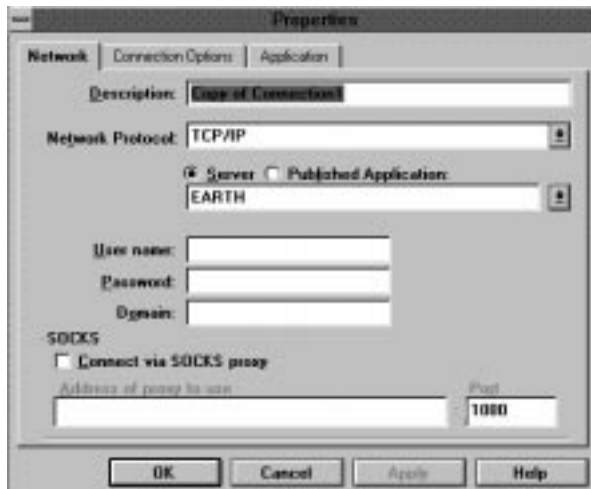
- 6 Follow steps 9 through 19 in the procedure, "To add a Dial-In remote application:" on page 40

EDITING REMOTE APPLICATION ENTRIES

TO COPY THE SELECTED REMOTE APPLICATION:

- 1 Highlight the remote application you want to copy.
- 2 From the Entry menu, click **Copy**.

The Properties dialog box appears.



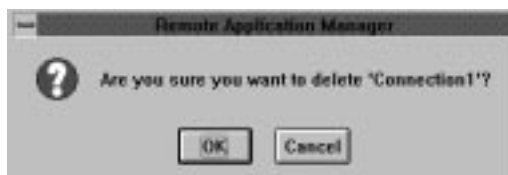
Properties

- 3 Make any desired changes to the remote application entry, then click **OK** to save the new entry.

TO DELETE THE SELECTED REMOTE APPLICATION:

- 1 Highlight the remote application you want to delete.
- 2 From the *Entry* menu, click **Delete**.

A confirmation box appears



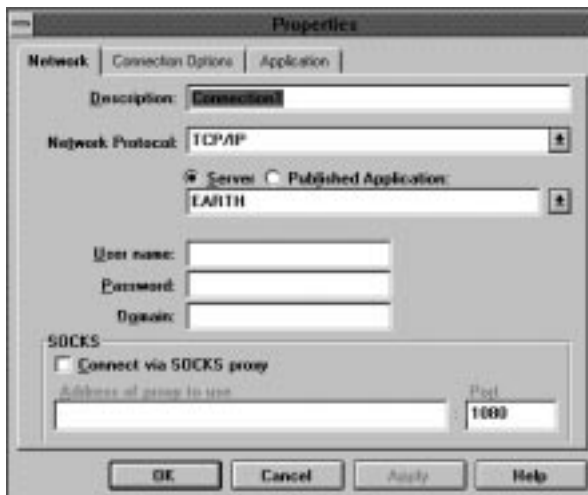
Confirmation

- 3 Click **OK** to delete the remote application.

TO EDIT THE SELECTED REMOTE APPLICATION:

- 1 Highlight the remote application you want to edit.
- 2 From the *Entry* menu, click **Properties**.

The Properties dialog box appears.



Properties

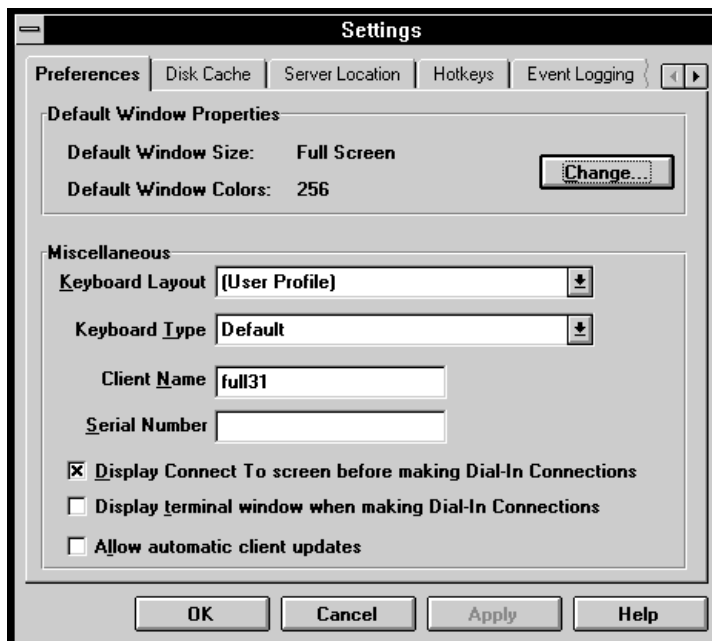
- 3 Make the desired changes to the remote application entry, then click **OK** to save the changes.
See *Configuring Remote Application Properties* for a description of the fields on the Properties screen.

Changing Remote Application Manager Settings

TO CHANGE A REMOTE APPLICATION'S SETTINGS:

- 1 Click **Options**, then click **Settings...**

The Settings dialog box is displayed.



Settings (Preference tab)

The Settings dialog box lets you create a group of settings that serve as defaults for all remote application entries created using the Remote Application Manager. You can override some of these global settings by choosing your own values when using the Add a New Remote Application wizard to create new entries or the Properties dialog box to edit existing entries.

The first tab displayed is the Preferences tab.

PREFERENCES TAB

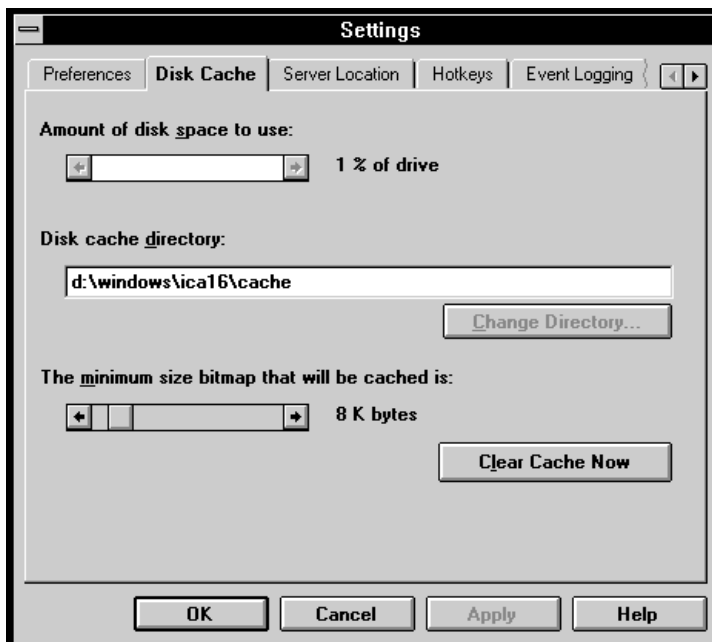
- 2 Make any changes in the Preferences tab.

Preferences tab field descriptions:

- **Default Window Properties:** window Size specifies the window size (in pixels) that remote applications run in. Window Colors specifies the number of colors displayed. These settings are used by each remote application unless you override these values in the remote application's properties. Click **Change** to modify these fields.
- **Keyboard Layout:** this selection box specifies the keyboard layout of your client computer. The Citrix server uses the keyboard layout information to configure your user session for your keyboard layout. The default value (User Profile) uses the keyboard layout specified in the user profile. If the keyboard layout of your client computer does not match the one specified in your user profile, select a keyboard layout from the list.
- **Keyboard Type:** this field allows you to specify the keyboard type of your client computer. The Citrix server uses the keyboard type information to configure your user session for your keyboard type. Use the default value of Default for most English and European keyboards. When used with a Japanese keyboard, Default auto-detects the keyboard type.
- **Client Name:** this text box allows you to change the client name of your client computer. The Citrix server uses the client name to uniquely identify resources (such as mapped printers, disk drives, and COM ports) associated with a given client computer. The client name should be unique for each computer running a copy of the Citrix ICA Client. If you do not use unique client names, device mapping and application publishing may not operate correctly.

- **Serial Number:** this is the serial number of your ICA Client software. This field is only necessary when you are using the Citrix ICA Client with a product such as *ICA Host/Terminal*, which requires each client to have a Citrix PC Client Pack serial number in order to connect to the server. If a serial number is required, you must enter it exactly as it appears on the Serial Number card. The Serial Number field is not used by MetaFrame servers.
 - **Display Connect To screen before making Dial-In Connections:** if this is checked, the Connect To screen is displayed when you make a Dial-In connection.
 - **Display terminal window when making Dial-In Connections:** check this box if your Dial-In configuration includes third-party products, such as security devices and X.25 PADs, that require an ASCII dialog before connecting to the Citrix server.
 - **Allow automatic client updates:** this option is not available on the NetXpress XL.
- 3 In the Settings dialog box, click the Disk Cache tab.
The Disk Cache tab is displayed.

DISK CACHE TAB



Disk Cache

Disk caching stores commonly used graphical objects such as icons in a local disk cache on the client computer to reduce the amount of data sent over the connection. Caching commonly used bitmaps tends to increase performance, especially for bandwidth-limited connections. Enable disk caching for individual remote applications from the Connection Options tab of the Properties dialog box.

- 4 Make any changes in the Disk Cache tab.

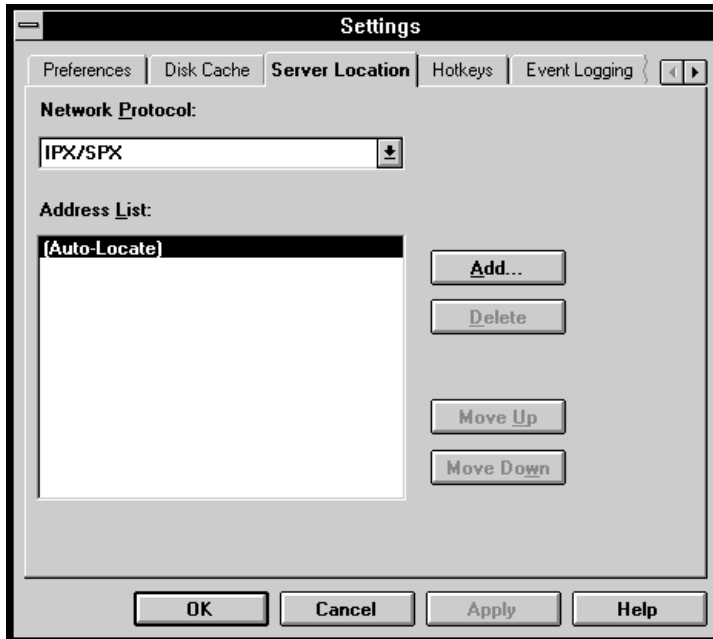
Field descriptions:

- **Amount of disk space to use:** configuration of this option is not available on the NetXpress XL.
- **Disk cache directory:** configuration of this option is not available on the NetXpress XL.
- **The minimum size bitmap that will be cached is:** specifies the smallest bitmap that will be cached to disk. Click **Clear Cache Now** to remove all current cache data.

- 5 In the Settings dialog box, click the Server Location tab.

The Server Location is displayed.

SERVER LOCATION TAB



Server Location

Server location (also called the ICA Browser or server browsing) provides a method for a user at a network-connected Citrix ICA Client computer to view a list of all Citrix servers on the network that have ICA connections configured for that network protocol (IPX/SPX, TCP/IP, or NetBIOS) and a list of all published applications. Each network protocol maintains a separate and independent server location system.

Note: The NetXpress XL only supports TCP/IP.

- 6 If TCP/IP is not selected in the Network Protocol field, click the down arrow, then select **TCP/IP**.
- 7 Select a Primary or Backup server group in the Server Group field.
- 8 Select the Citrix server you want in the Address List list box:

| | If... | then... |
|--|--|---|
| | a Citrix server is specified in the Address List box for the network protocol, | the ICA Client computer sends a request for the server and published application lists to the specified Citrix server address. |
| | Auto-Locate is specified in the Address List box for the network type, | the ICA Client computer broadcasts a "Get Nearest Citrix Server" packet. The Citrix server responds with a list of all Citrix servers on the network that have ICA connections configured for that network type (IPX, TCP/IP, or NetBIOS) and a list of all published applications. |

Some network configurations using routers or gateways may require you to specify the address of a Citrix server due to broadcast packet filtering in the router or gateway, or you may want to designate a particular Citrix server to eliminate broadcasts on your network.

Note: You can also enter network addresses for Citrix servers instead of Citrix server names. For example, when configuring TCP/IP server location, you can specify the IP address of the Citrix server.

| 9 | To... | do this... |
|---|---|--|
| | add a Citrix server to the Address List, | <ol style="list-style-type: none"> 1 Click Add... <i>The Add Server Address dialog box is displayed.</i> 2 Type the server address in the Enter new server address field, then click OK. |
| | delete a Citrix server in the Address List, | select the server to be deleted, then click Delete . |

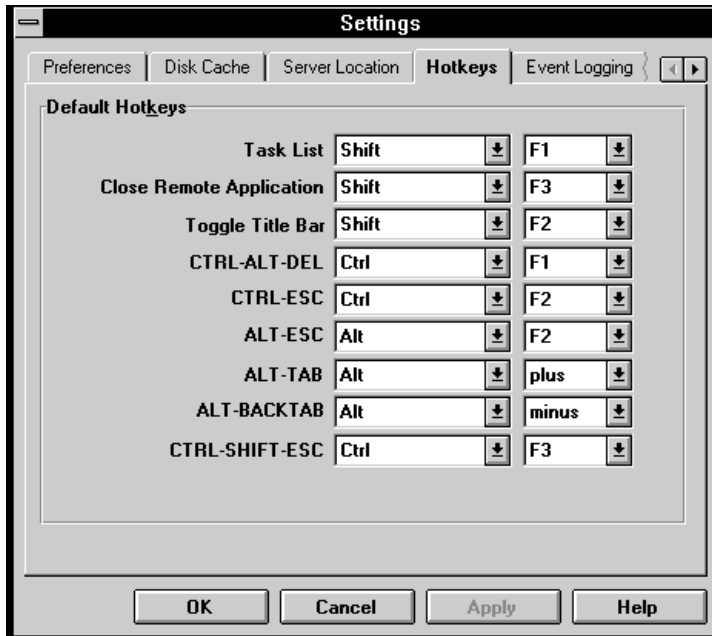
| 10 | If... | then... |
|----|---|---|
| | you want to browse for Citrix servers or published applications that are inside a firewall from a client machine that is outside the firewall, | select Use alternate address for firewall connection. |
| | you do not want to browse for Citrix servers or published applications that are inside a firewall from a client machine that is outside the firewall, | leave the Use alternate address fro firewall connection unchecked, or clear the checkbox. |

Note: This checkbox only appears if TCP/IP is specified in the Network Protocol field and a Citrix server address is entered in the Address List. The firewall and the Citrix servers must be configured to map the internal network addresses of Citrix servers to external Internet addresses. Enter the external Internet address in the Address List. Refer to the MetaFrame Administrator's Guide for more information on using alternate addresses.

11 In the Settings dialog box, click the Hotkeys tab.

The Hotkeys tab is displayed.

HOTKEYS TAB



Hotkeys

The Citrix Win16 Client provides users with hotkeys that can be used during ICA sessions to control various functions. Some hotkeys control the behavior of the Win16 Client itself while others emulate standard Windows hotkeys.

For example, the standard Windows hotkey ALT-ESC cycles the focus through the minimized icons and open windows of applications that are running on a Windows computer. Using the ALT-ESC hotkey on your client PC cycles the focus through the open applications on your client PC. If you are connected to a Citrix server and would like to cycle the focus through applications you have opened remotely, you cannot press ALT+ESC because this key combination is reserved by your local Windows operating system for its own use. To simulate the ALT+ESC hotkey in your ICA session, use the ICA Win16 Client hotkey ALT+F2.

| 12 | To... | do this... |
|----|--------------------------------|--|
| | customize a hotkey assignment, | <ol style="list-style-type: none"> 1 In the field you want to customize, click the down arrow in the first list box, then select Shift, Ctrl or Alt. 2 In the second list box, select the key you want. |
| | disable a hotkey, | <ol style="list-style-type: none"> 1 In the field you want to disable, click the down arrow in the first list box, then select (none). 2 In the select list box, click the down arrow, then select (none). |

Field descriptions:

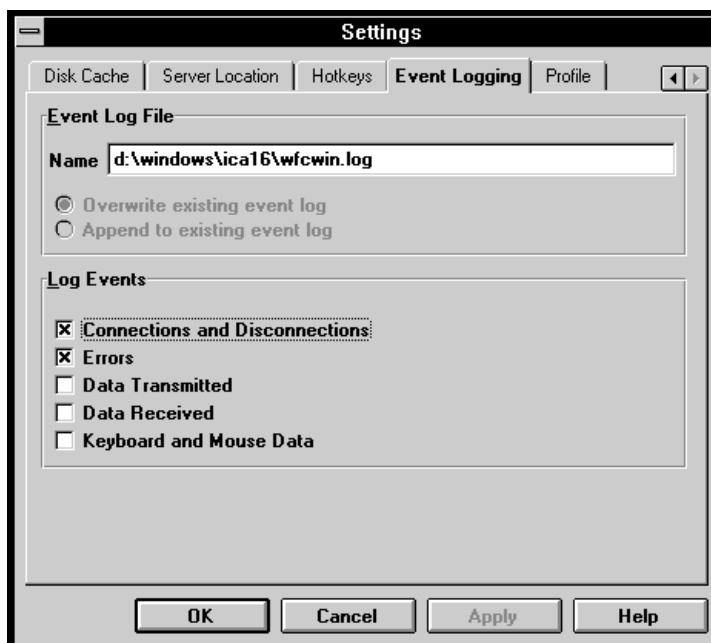
- **Task List:** displays the Windows Task List for your local Windows desktop on your client computer. The default value for the Task List hotkey is SHIFT+F1. You can also use CTRL+ESC to display the Windows Task List on your client computer if you are not using SHIFT+F1 as an ICA Win16 Client hotkey.
- **Close Remote Application:** disconnects from the Citrix server and exits the ICA Win16 Client. Using this hotkey will either leave the associated application in a disconnected state on the Citrix server or exit the application on the Citrix server depending on how the application is configured. The default value for the Close Remote Application hotkey is SHIFT+F3.

- **Toggle Title Bar:** causes the Citrix ICA Client window to display or hide its Windows title bar. The default value for the Toggle Title Bar hotkey is SHIFT+F2.
- **CTRL-ALT-DEL:** sends the standard Windows hotkey CTRL+ALT+DEL to the Citrix server running the remote application. This hotkey displays the Windows NT Security desktop in the ICA session. The default value for the CTRL-ALT-DEL hotkey is CTRL+F1.
- **CTRL-ESC:** sends the standard Windows hotkey CTRL+ESC to the Citrix server running the remote application. When using this hotkey during an ICA session on a ICA server, the remote Task List appears. If the ICA session is running on a MetaFrame server, the remote Windows NT Start menu appears. The default value for the CTRL-ESC hotkey is CTRL+F2.
- **ALT-ESC:** sends the standard Windows hotkey ALT+ESC to the Citrix server running the remote application. This hotkey is used to cycle the focus through maximized and minimized windows of programs that have been opened in an ICA session. The default value for the ALT-ESC hotkey is ALT+F2.
- **ALT-TAB:** sends the standard Windows hotkey ALT+TAB to the Citrix server running the remote application. Use this hotkey to cycle through applications that have been opened in the ICA session. A popup box appears and displays the programs as you cycle through them. The selected application receives keyboard and mouse focus. The default value for the ALT-TAB hotkey is ALT+PLUS.
- **ALT-BACKTAB:** sends the standard Windows hotkey ALT+SHIFT+TAB to the Citrix server running the remote application. Like the ALT+TAB hotkey, this key sequence cycles through applications that have been opened in the ICA session but in the opposite direction. The chosen application receives keyboard and mouse focus. The default value for the ALT-BACKTAB hotkey is ALT+MINUS.
- **CTRL-SHIFT-ESC:** sends the standard Windows hotkey CTRL+SHIFT+ESC to the MetaFrame server running the remote application. (This hotkey is not used by ICA sessions on ICA servers.) This hotkey displays the Windows NT Task Manager in the ICA session. The default value for the CTRL-SHIFT-ESC hotkey is CTRL+F3.

9 Click the Event Logging tab.

The Event Logging tab is displayed.

EVENT LOGGING TAB



Event Logging

The ICA Win16 Client supports event logging for diagnosis and troubleshooting purposes. Event log data is stored as standard ASCII text data in a log file (default name Wfcwin.log) and can be viewed by any text editor.

Note: Use event logging sparingly and only when actively investigating a problem. Due to the large amount of data generated and logged to disk, event logging causes a significant performance degradation.

13 Under Log Events, select the events you want to be logged.

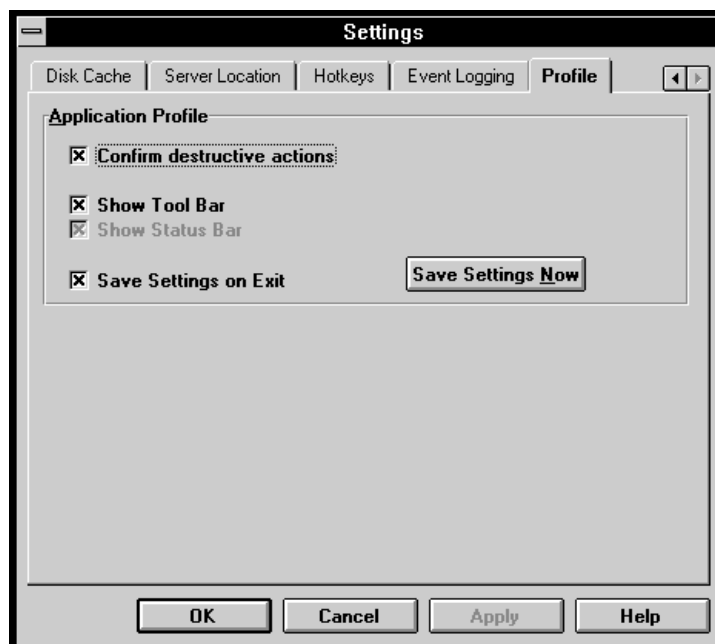
Fields descriptions:

- **Event Log File:** specifies the event log file.
 - **Name:** this option is not configurable.
 - **Overwrite existing event log:** this option is not configurable.
 - **Append to existing event log:** this option is not configurable.
- **Log Events:** this dialog box specifies the events to be logged.
 - **Connections and Disconnections:** logs all connect and disconnect events. This selection is enabled by default.
 - **Errors:** logs all errors. This selection is enabled by default.
 - **Data Transmitted:** logs all data transmitted to the Citrix server. The data is displayed in both hexadecimal and ASCII format.
 - **Data Received:** logs all data received from the Citrix server. The data is displayed in both hexadecimal and ASCII format.
 - **Keyboard and Mouse Data:** logs all keyboard and mouse data. The keyboard data is displayed as a scan code or character code and shift state; the mouse data is displayed as the mouse state followed by the X and Y coordinates.

14 Click the Profile tab.

The Profile tab is displayed.

PROFILE TAB



Profile Settings

This screen allows you to change some of the application profile settings for Remote Application Manager. All settings are enabled by default.

| 15 | To... | do this... |
|----|---|---|
| | disable an application profile setting, | click to clear the setting you want to disable, then click Save Settings Now . |
| | enable an application profile setting, | click to select the setting you want to enable, then click Save Settings Now . |

Profile tab field descriptions:

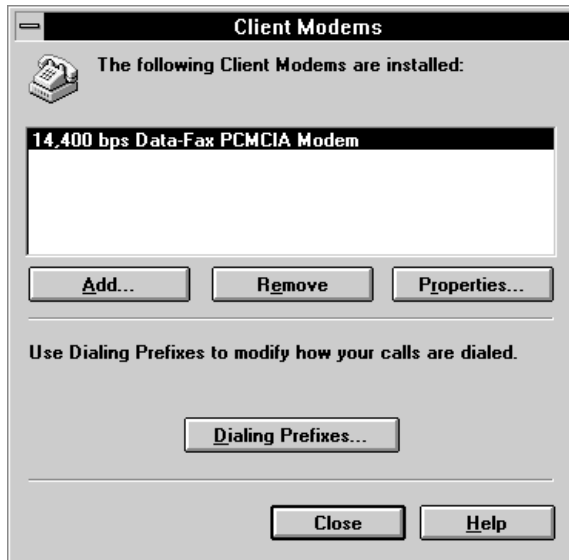
- **Confirm destructive actions:** set this check box to be prompted for confirmation when you perform a destructive action. Clear this check box if you do not want to be prompted when performing destructive actions.
- **Show Tool Bar:** set this check box
- **Exit:** set this check box to save the application profile automatically when you exit Remote Application Manager.
- **Save Settings Now:** click this button to immediately save the current application profile.

Configuring Modems for Async Dial-Up

The following section contains procedures for installing and configuring modems used to make Dial-In ICA connections.

TO CONFIGURE MODEMS:

- 1 From the Options menu, click **Modems...**
The Client Modems dialog box is displayed.



Client Modems

Any currently configured modems are listed.

- Click **Add** to display the **Install New Modem** dialog box, described in “To install a new ICA Client modem” below.
- Click **Remove** to delete the selected modem entry.
- Click **Properties** to display the **Modem Properties** screen, described in “To change the properties of a modem” below.
- Click **Close** to exit the **Client Modems** dialog box.

TO INSTALL A NEW ICA CLIENT MODEM:

Note: You can also install a new ICA Client modem when creating a Dial-In remote application.

- 1 In the Client Modems dialog box, click **Add**.



The Install a New Client Modem wizard is displayed.



Install a New Client Modem

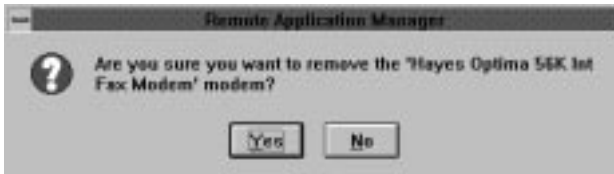
Note: Make sure your modem is properly connected to the computer and turned on and no other programs are accessing the modem or serial port.

| 2 | If... | then... |
|---|---|--|
| | <p>you want the ICA Win16 Client to auto-detect your modem,</p> | <p>make sure Don't detect my modem; I will select it from a list is not selected, then click Next. <i>The Client detects your modem.</i></p> <p>If the Client does not detect a modem, go to step 2 in <i>you don't want the ICA Win16 Client to auto-detect your modem</i> (below).</p> |

| 2 | If... | then... |
|---|---|---|
| | <p>you don't want the ICA Win16 Client to auto-detect your modem,</p> | <ol style="list-style-type: none"> <p>Select Don't detect my modem; I will select it from a list, then click Next.</p> <p><i>The next screen of the Install a New Client Modem wizard is displayed.</i></p>  <p><i>Install a New Client Modem wizard</i></p> <p>Select a modem in the list box, then click Next.</p> <p>Note: It is recommended you select the modem installed in your system.</p> <p><i>The next screen of the Install a New Client Modem wizard is displayed.</i></p>  <p><i>Install a New Client Modem wizard</i></p> <p>Select the Port Type and Port Name, then click Next.</p> <p>Note: Internal modems should be set at COM3, IRQ 5, and Hardware Address 3F8.</p> <p><i>The final screen of the Install a New Client Modem wizard is displayed.</i></p> <p><i>Install a New Client Modem wizard</i></p> <p>Click Finish to complete the wizard, Back to return to a previous screen in the wizard, or Cancel to cancel the modem installation.</p> |

TO DELETE A MODEM:

- 1 In the Client Modems dialog box, click the modem you want to delete, then click **Remove**.
A confirmation dialog box is displayed.

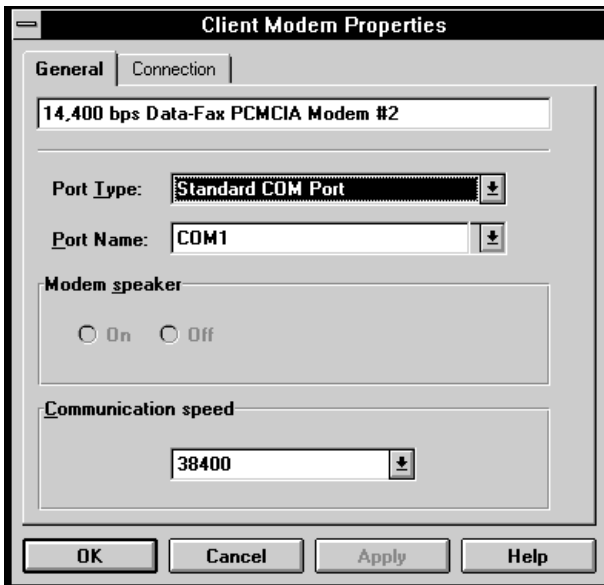


Confirmation

- 2 Click **Yes** to confirm deletion of the selected modem.

TO CHANGE THE PROPERTIES OF A MODEM:

- 1 In the Client Modems dialog box, select your modem, then click **Properties**.
The Client Modem Properties dialog box is displayed.



Client Modem General Properties

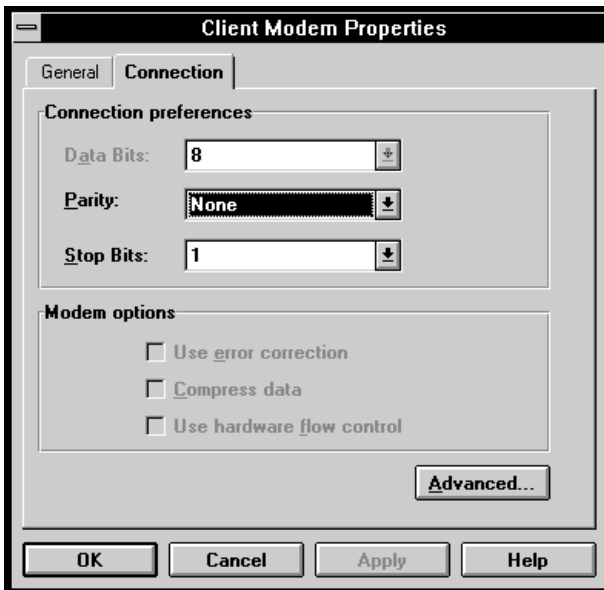
- 2 Make any changes in the General tab.

General tab field descriptions:

- **Port Type:** the type of COM port. The default is Standard COM Port.
- **Port Name:** The name of the COM port. Select a port name from the pull-down list or type one into the text box.
- **Modem speaker:** you can enable or disable the modem's internal speaker.
- **Communication speed:** the speed of the Dial-In connection. Select a baud rate from the pull-down list.

3 Click the Connection tab.

The Connection tab is displayed.



Client Modem Connection Tab Properties

4 Make any changes in the Connection tab.

Connection tab field descriptions:

- **Data Bits:** the number of data bits. This value is always 8 for ICA connections.
- **Parity:** the serial parity setting to use. Select a type from the pull-down list. Use None whenever possible.
- **Stop Bits:** the number of stop bits to use. Use 1 whenever possible.
- **Use error correction:** select this button to use the error correction feature of your modem.
- **Compress data:** select this button to use the data compression feature of your modem.
- **Use hardware flow control:** select this button to use hardware flow control.

5 Click **Advanced**.

The Advanced Connection Settings screen is displayed.

Advanced Connection Settings field descriptions:

- **Flow Control:** the flow control method to use. The selections are:
 - **Hardware:** uses the hardware modem control signals specified in this screen for flow control. This is the default setting.
 - **Software XON/XOFF:** uses software (XON/XOFF) flow control.
 - **None:** no flow control. Not recommended at high baud rates due to overrun errors.
- **DTR State:** this defines the state of the DTR modem control signal. Click **On** to turn on the DTR signal; click **Off** to turn off the DTR signal. The DTR value required depends on your hardware configuration. The default value of the DTR State is **On**. This value is ignored if DTR hardware flow control is used.
- **RTS State:** this defines the state of the RTS modem control signal. Click **On** to turn on the RTS signal; click **Off** to turn off the RTS signal. The RTS value required depends on your hardware configuration. The default value of the RTS State is **Off**. This value is ignored if RTS hardware flow control is used.

- **Hardware Flow Control:** these fields define the type of hardware flow control used when hardware flow control is specified. The selections are:
 - **Turn off [RTS|DTR] when receive buffer is full:** specifies the signal to turn off when the ICA Client receive buffer is full. The default value is RTS. If RTS is selected, the RTS State group box is disabled. If DTR is selected, the DTR State group box is disabled.
 - **Transmit data when [CTS|DSR] is on:** specifies the signal used by the modem to control when the ICA Client is allowed to transmit data. The default value is CTS.

CONFIGURING DIALING PREFIXES

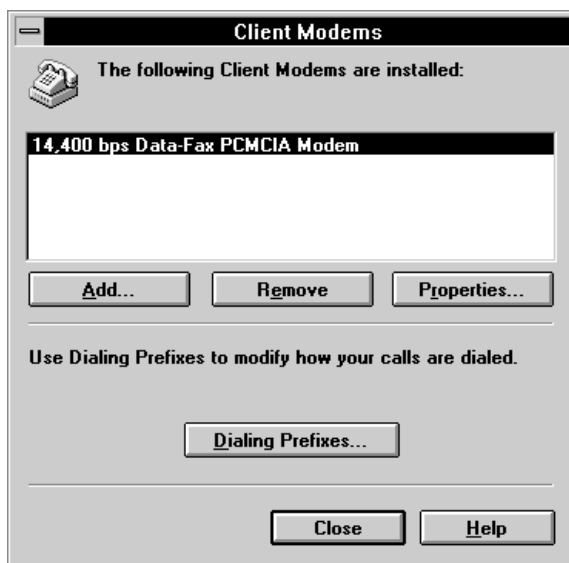
This section contains procedures for configuring dialing prefixes. The most common use of dialing prefixes is defining different dialing methods for different telephone systems. For example, a user with a laptop computer may need to dial 9 to get an outside line at the office but need no prefix when working on the road or at home. In this case, the user may want to define a dialing prefix named Office for use when dialing out from the office.

Dialing prefixes are global; that is, they affect all remote applications that dial out. To use a dialing prefix, you must apply it, which enables it for all subsequent remote connections until you apply another one or disable dialing prefixes.

TO CONFIGURE DIALING PREFIXES:

- 1 From the Options menu, click **Modems**.

The Client Modems dialog box is displayed.



Client Modems

2 Click **Dialing Prefixes...**

The *Dialing Prefixes* screen is displayed.



Add Dialing Prefix

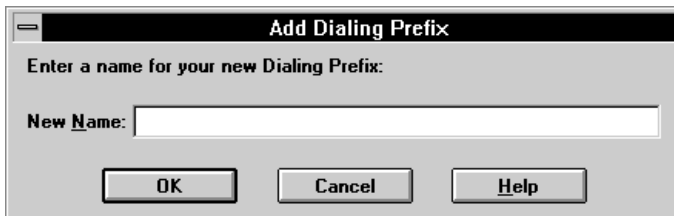
Use the Dialing Prefixes dialog box to create, modify, and delete dialing prefixes.

Note: The text of the currently selected dialing prefix appears in the Prefix Name text box, or No Prefix if no dialing prefix is active.

TO ADD A NEW DIALING PREFIX:

1 Click **Add**.

The *Add Dialing Prefix* dialog box is displayed.

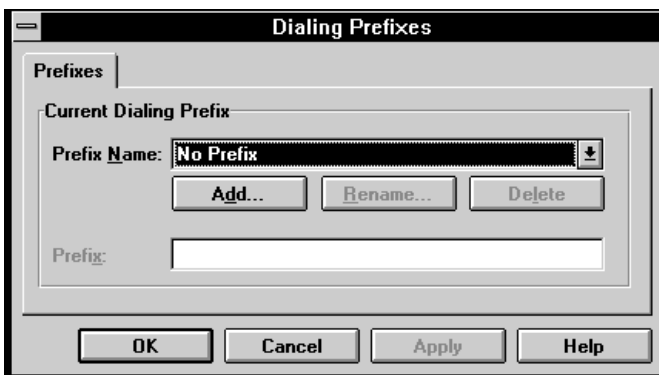


Add Dialing Prefix

2 Enter a name for the dialing prefix.

3 Click **OK**.

The *Dialing Prefixes* dialog box is displayed again.



Add Dialing Prefix

4 Enter the dialing prefix in the Prefix text box.

For example, if you must dial 9 to get to an outside line from your office, enter 9 in the Prefix text box.

5 Click **Close**.

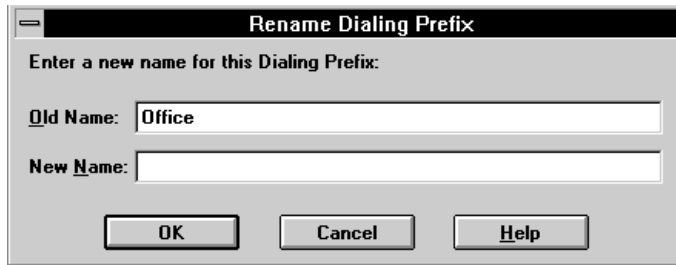
TO MODIFY A DIALING PREFIX:

- 1 In the Dialing Prefixes dialog box, select the name of the dialing prefix to modify from the Prefix Name pull-down list. The dialing prefix information is displayed in the Prefix text box.
- 2 Modify the text in the **Prefix** text box as required.
- 3 Click **Close**.

TO RENAME A DIALING PREFIX:

- 1 In the **Dialing Prefixes** dialog box, select the name of the dialing prefix to rename.
- 2 Click **Rename...**

The Rename Dialing Prefix dialog box is displayed.



Rename Dialing Prefix

- 3 Enter the new name for the dialing prefix in the New Name text box.
- 4 Click **OK**.

TO APPLY A DIALING PREFIX:

- 1 From the **Prefix Name** pull-down list, click the name of the dialing prefix to apply (or **No Prefix** to disable dialing prefixes).
*The dialing prefix information is displayed in the **Prefix** text box.*
- 2 Click **Apply** to enable the dialing prefix and remain in the dialog box or click **Close** to enable the dialing prefix and exit.

TO DELETE A DIALING PREFIX:

- 1 From the Prefix Name pull-down list, select the name of the dialing prefix to delete.
- 2 Click **Delete**.
A confirmation dialog box is displayed.
- 3 Click **Yes** in the confirmation dialog box to delete the dialing prefix.

Configuring Serial Devices

This section describes how to configure a serial connection between an ICA Client computer and a Citrix server. Serial connections require a null modem cable and an available serial port on the client PC and on the Citrix server. The Citrix server must be configured to allow async ICA sessions. Use the Serial Devices dialog box to configure serial connections between a client PC and a Citrix server.

TO CONFIGURE SERIAL DEVICES:

- 1 From the Options menu, click **Serial Devices...**

The Serial Devices dialog box is displayed.



Serial Devices

Note: All currently configured direct devices are listed.

- 2 Click **Remove** to delete the selected serial device entry.
- 3 Click **Properties** to bring up the Serial Device Properties screen, described in "To change the properties of a serial device" below.
- 4 Click **Close** to exit the **Serial Devices** screen.

TO INSTALL A NEW SERIAL DEVICE:

Note: You can also install a new serial device when creating a serial connection remote application.

- 1 In the Serial Devices dialog box, click **Add**.

The Install a New Serial Device dialog box is displayed.

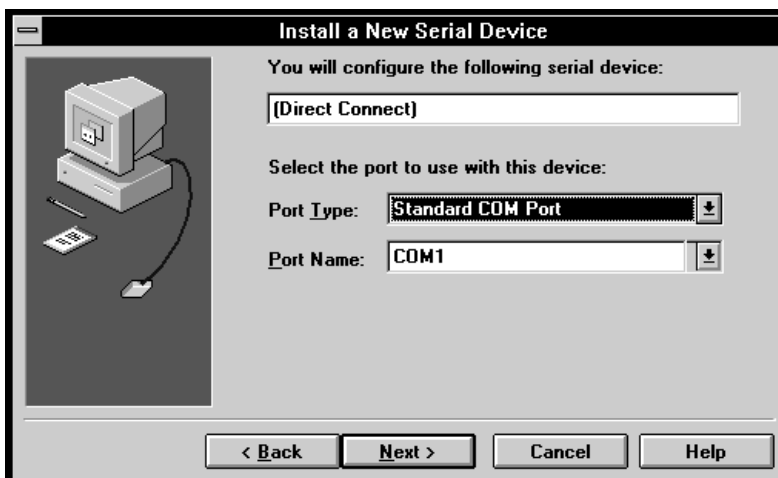


Install a New Serial Device

Note: Make sure the null modem cable between the client and server computers is properly connected and that no other programs are accessing the client serial port.

- 2 Click **Next**.

The Citrix ICA Client prompts you to configure your COM port.



Configure COM port

- 3 Specify your Port Type and Port Name.

4 Click Next.

The Finish dialog box is displayed.



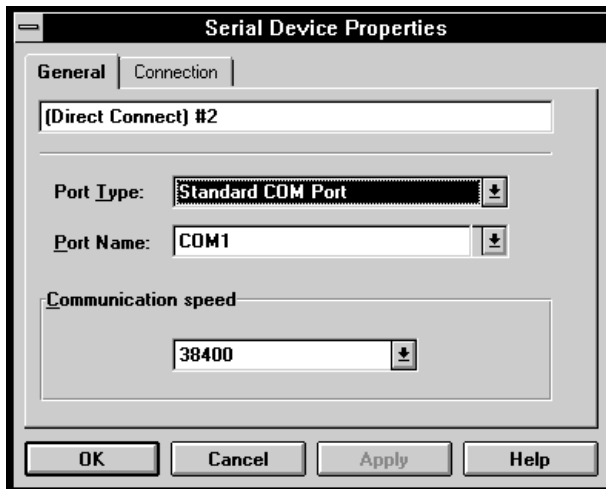
Finish Serial Device Set Up

5 Click Finish.

Configuring Serial Device Properties

- 1 From the Serial Devices dialog box, select your serial device.
- 2 Click **Properties**.

The Serial Device Properties screen is displayed.



Serial Device Properties (General tab)

- 3 Make any changes in General tab.

General tab field descriptions:

- **Port Type:** the type of COM port. The default is **Standard COM Port**.
- **Port Name:** the name of the COM port. Select a port name from the pull-down list or type one into the text box.
- **Communication speed:** the speed of the serial connection. Select a baud rate from the pull-down list that matches the baud rate used by the Citrix server.

- 4 Click the Connection tab.

The Serial Device Properties Connection tab is displayed.



Serial Device (Connection tab)

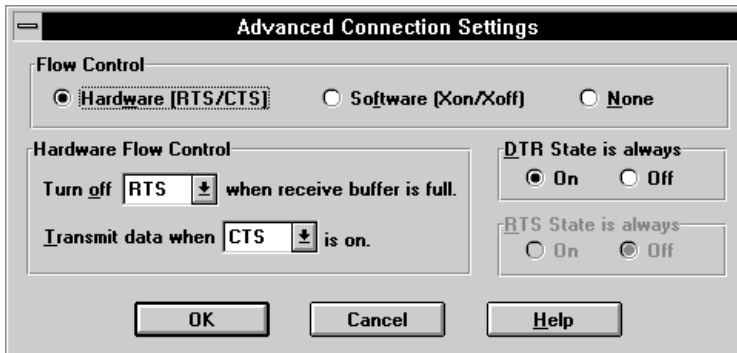
- 5 Make any changes in the Connection tab.

Connection tab field descriptions:

- **Data Bits.** The number of data bits. This value is always **8** for ICA connections.
- **Parity.** The serial parity setting to use. Select a type from the pull-down list. Use **None** whenever possible.
- **Stop Bits.** The number of stop bits to use. Use **1** whenever possible.

6 Click **Advanced...**

The Advanced Connection Settings screen is displayed.



Serial Device Advanced Connection Settings

Advanced Connection Settings field descriptions:

- **Flow Control:** the flow control method to use. The selections are:
 - **Hardware:** uses the hardware control signals specified in this screen for flow control. This is the default setting.
 - **Software XON/XOFF:** uses software (XON/XOFF) flow control.
 - **None:** no flow control. Not recommended at high baud rates due to overrun errors.
- **DTR State:** this defines the state of the DTR control signal. Click **On** to turn on the DTR signal; click **Off** to turn off the DTR signal. The DTR value required depends on your hardware configuration. The default value of the DTR State is **On**. This value is ignored if DTR hardware flow control is used.
- **RTS State:** this defines the state of the RTS control signal. Click **On** to turn on the RTS signal click **Off** to turn off the RTS signal. The RTS value required depends on your hardware configuration. The default value of the RTS State is **Off**. This value is ignored if RTS hardware flow control is used.
- **Hardware Flow Control:** these fields define the type of hardware flow control used when hardware flow control is specified. The selections are:
 - **Turn off [RTS|DTR] when receive buffer is full:** specifies the signal to turn off when the ICA Client receive buffer is full. The default value is RTS. If RTS is selected, the RTS State group box is disabled. If DTR is selected, the DTR State group box is disabled.
 - **Transmit data when [CTS|DSR] is on:** specifies the signal used to control when the ICA Client is allowed to transmit data. The default value is CTS.

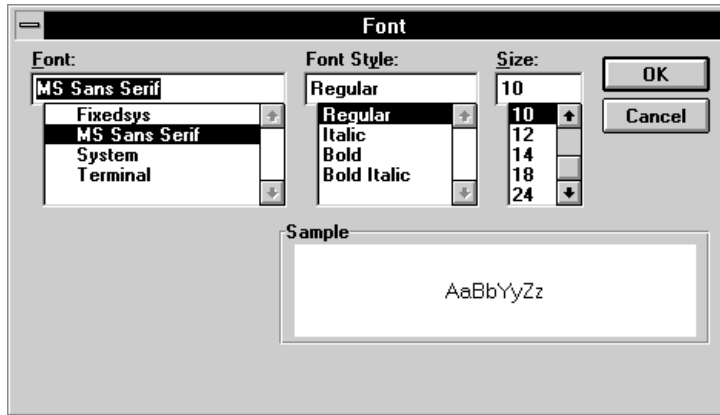
Setting Display Fonts

The Font dialog box lets you change Remote Application Manager display fonts.

TO SET DISPLAY FONTS:

- 1 From the Options menu, click **Font**.

The Citrix ICA Client Font screen is displayed.



Font

- 2 Choose font, font style and size you want.
- 3 Click **OK** to accept the changes.

Note: Changing the type font will alter the appearance of the Description, Server/Phone #, and Protocol/Device fields on the Remote Application Manager Main menu.

The Help Menu

TO VIEW HELP:

- 1 Click the Help menu, then choose **Index**.

Help is displayed.



Help

- 2 Click the topic you want.

TO DISPLAY VERSION INFORMATION:

From the Help menu, click **About Remote Application Manager**.

The About Remote Application Manager screen is displayed.



About Remote Application Manager

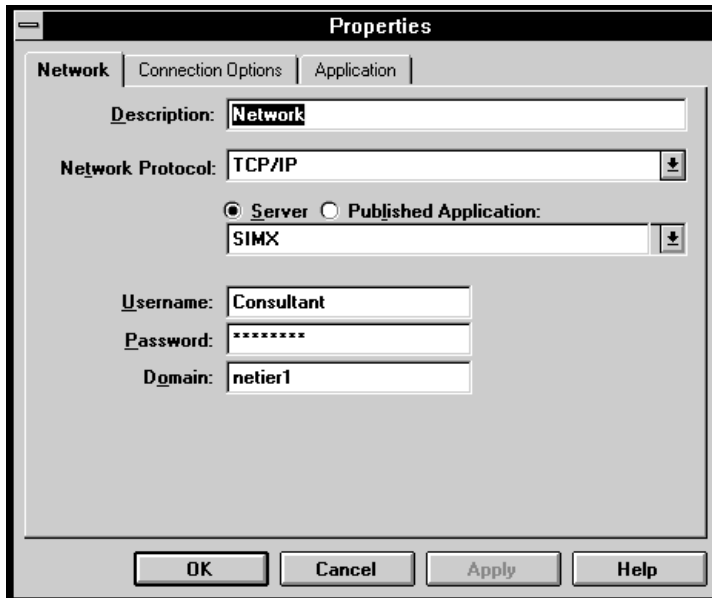
Configuring Remote Application Properties

The Remote Application Properties dialog box is used to maintain the configuration information associated with individual entries in the Remote Application Manager list. Information in the Properties dialog box overrides the global default values maintained by the Settings dialog.

TO VIEW A NETWORK REMOTE APPLICATION'S PROPERTIES:

- 1 Select an entry in the Remote Application Manager list.
- 2 From the Entry menu, click **Properties**.

The Properties dialog box is displayed.



Properties (Network tab)

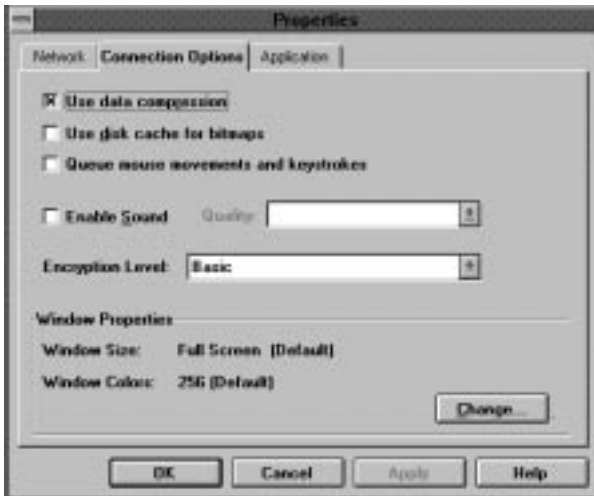
NETWORK TAB

Network tab field descriptions:

- **Description:** a short description that appears in the server list on the main menu. This description also appears in the title bar of the Citrix ICA Client window. The description cannot contain any of the following characters: \ / : * ? " < > | , . { } ()
- **Network Protocol:** the network protocol used. The transport types for Windows Version 3.1 and Windows for Workgroups Version 3.11 include:
- **Server or Published Application:** click **Server** to configure a connection to a Citrix server. Click **Published Application** to configure a connection to a published application. Specify the name of the Citrix server, or select a Citrix server or published application name from the pull-down list, or specify the TCP/IP address of the Citrix server.
- **Username, Password, Domain:** these fields can be used to automatically log on to the Citrix server once a connection is established. If these fields are not specified, the logon screen appears when the connection to the Citrix server is established.

3 Click the Connection Options tab.

The Connection Options dialog box is displayed.



Properties (Connection Options tab)

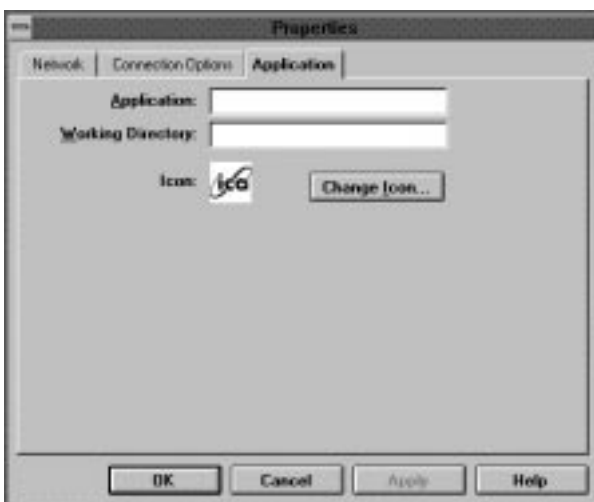
CONNECTION OPTIONS TAB

Connection Options field descriptions:

- **Data Compression:** reduces the amount of data that needs to be transferred, but requires additional processor resources to compress and decompress the data.
- **Disk Cache:** stores commonly-used graphical objects, such as bitmaps, in a local disk cache using local hard disk space.
- **Queue mouse movements and keystrokes:** causes the Client to send less frequent mouse and keyboard updates to the Citrix server.
- **Enable Sound:** select if you are connecting to a MetaFrame server.
- **Encryption Level:** determines the level of encryption for the ICA Client. The default is Basic. Strong encryption is available only with the SecureICA Option Pack.
- **Window Properties:** specifies the window size and colors.

4 Click the Application tab.

The Application dialog box is displayed.



Properties (Application tab)

APPLICATION TAB

| 5 | If... | then... |
|---|--|---|
| | you want to connect a specific application after logon to the Citrix server, | <ol style="list-style-type: none"> 1 In the Application: field, specify the application to run. Note: The Citrix server must have access to the selected application. 2 In the Working Directory: field, enter the drive and path of the working directory you wish to use with the application specified in the Application: field. 3 Click Next. |
| | you want to run a Windows NT desktop after logon to the Citrix server, | leave both the Application: and Working Directory fields blank. |

- 6 To change the icon, click **Change Icon...**

The Change Icon dialog box is displayed.



Change Icon

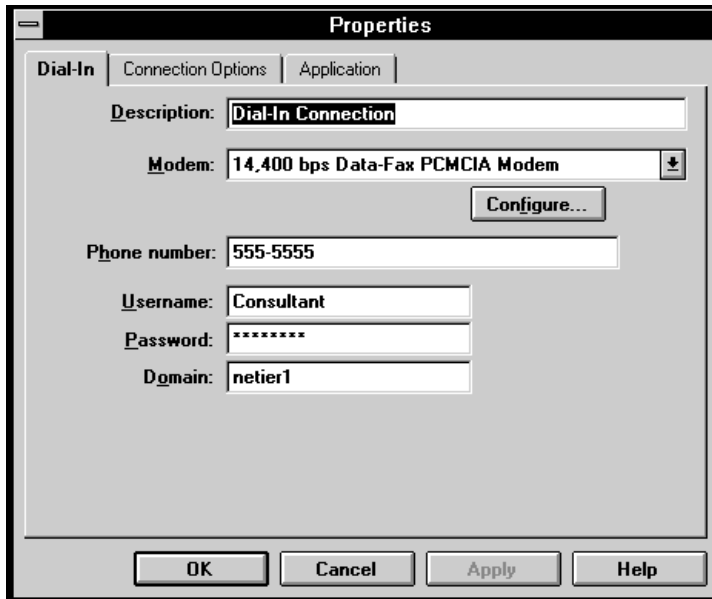
- 7 Select the icon you want, then click **OK**.

Note: To change the icon back to the default icon, in the Change Icon dialog box, click **Use Default**.

Dial-In Remote Application Properties

- 1 Select an entry in the Remote Application Manager list.
- 2 From the Entry menu, click **Properties**.

The Properties dialog box is displayed.



Properties (Dial-In tab)

DIAL-IN TAB

Dial-In tab field descriptions:

- **Description.** A short description that appears in the server list on the **Main** menu. This description also appears in the title bar of the Citrix ICA Client window. The description cannot contain any of the following characters: \ / : * ? " < > | , . { } ()
- **Modem.** The modem used. Click **Configure** to invoke the **Client Modem Properties** dialog box. See the section "To change the properties of a modem" in this chapter for a detailed description of how to configure modems.
- **Phone number.** Enter the telephone number in a format compatible with your modem.
- **Username, Password, Domain.** These fields can be used to automatically log on to the Citrix server once a connection is established. If these fields are not specified, the logon screen appears when the connection to the Citrix server is established.

- 3 Click the Connection Options tab.

CONNECTION OPTIONS TAB

Refer to the "Connection Options field descriptions:" on page 75 for field descriptions.

- 4 Click the Application tab.

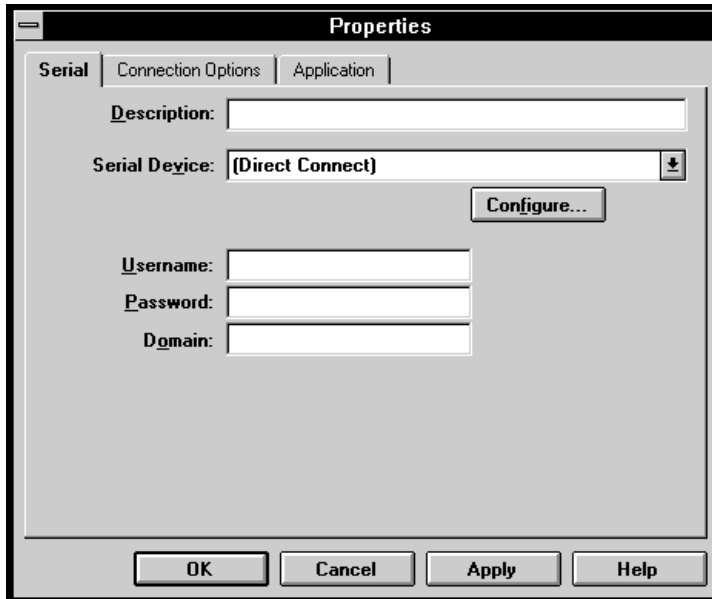
APPLICATION TAB

Refer to steps 6 through 9 under To View a Network Remote Application's Properties on page 64.

Serial Remote Applications Properties

- 1 Select an entry in the Remote Application Manager list.
- 2 From the Entry menu, click **Properties**.

The Properties dialog box is displayed.



Properties (Serial tab)

SERIAL TAB

Serial tab field descriptions:

- **Description:** a short description that appears in the server list on the **Main** menu. This description also appears in the title bar of the Citrix ICA Client window. The description cannot contain any of the following characters: \ / : * ? " < > | , . { } ()
- **Serial Device:** the serial device used. Click **Configure** to invoke the **Serial Device Properties** dialog box. See the section "To change the properties of a serial device" in this chapter for a detailed description of how to configure serial devices.
- **Configure:** click this button to change the serial device configuration (see To Change the Serial Device Configuration, below).
- **Username, Password, Domain:** these fields can be used to automatically log on to the Citrix server once a connection is established. If these fields are not specified, the logon screen appears when the connection to the Citrix server is established.

TO CHANGE THE SERIAL DEVICE CONFIGURATION:

- 1 In the Serial tab, click **Configure...**

The Serial Device Properties dialog box is displayed.



- 2 In the General tab, make any changes.

General tab field descriptions:

- **Port Type:** the type of COM port. The default is Standard COM Port.
- **Port Name:** The name of the COM port. Select a port name from the pull-down list or type one into the text box.
- **Communication speed:** the speed of the Dial-In connection. Select a baud rate from the pull-down list.

- 3 Click the Connection tab.

The Connection tab is displayed.



- 4 Make any changes in the Connection tab.

Connection tab field descriptions:

- **Data Bits:** the number of data bits. This value is always 8 for ICA connections.
- **Parity:** the serial parity setting to use. Select a type from the pull-down list. Use None whenever possible.
- **Stop Bits:** the number of stop bits to use. Use 1 whenever possible.

5 Click **Advanced** to display advanced connection settings options.

The Advanced Connection Settings dialog box is displayed.



Advanced Connection Settings

6 Make any changes in the Advanced Connection Settings dialog box.

Advance Connection Settings field descriptions:

- **Flow Control:** the flow control method to use. The selections are:
 - **Hardware:** uses the hardware modem control signals specified in this screen for flow control. This is the default setting.
 - **Software XON/XOFF:** uses software (XON/XOFF) flow control.
 - **None:** no flow control. Not recommended at high baud rates due to overrun errors.
- **DTR State:** this defines the state of the DTR modem control signal. Click **On** to turn on the DTR signal; click **Off** to turn off the DTR signal. The DTR value required depends on your hardware configuration. The default value of the DTR State is **On**. This value is ignored if DTR hardware flow control is used.
- **RTS State:** this defines the state of the RTS modem control signal. Click **On** to turn on the RTS signal; click **Off** to turn off the RTS signal. The RTS value required depends on your hardware configuration. The default value of the RTS State is Off. This value is ignored if RTS hardware flow control is used.
- **Hardware Flow Control:** these fields define the type of hardware flow control used when hardware flow control is specified. The selections are:
 - **Turn off [RTS|DTR] when receive buffer is full:** specifies the signal to turn off when the ICA Client receive buffer is full. The default value is RTS. If RTS is selected, the RTS State group box is disabled. If DTR is selected, the DTR State group box is disabled.
 - **Transmit data when [CTS|DSR] is on:** specifies the signal used by the modem to control when the ICA Client is allowed to transmit data. The default value is CTS.

7 When finished with the Serial tab, click the Connection Options tab.

CONNECTION OPTIONS TAB

Refer to the “Connection Options field descriptions:” on page 75 for field descriptions.

8 Click the Application tab.

APPLICATION TAB

Refer to steps 6 through 9 under To View a Network Remote Application’s Properties on page 64.

Terminal Server Client

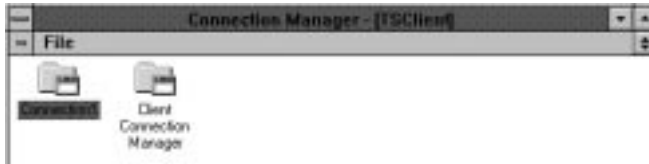
Connecting to a Terminal Server Session

Note: The Clients must be configured with at least one NetXpress user entry before connection to the server is possible.

TO BEGIN RUNNING TERMINAL SERVER CLIENT:

- 1 In the task bar, click **Start, Programs, Terminal Server Client.**

The Client Connection Manager is displayed.



Client Connection Manager

The Client Connection Manager main menu contains a list of the configured remote applications you can use to establish a connection to a Windows NT 4.0 Terminal server. This menu also contains several toolbar buttons and pull-down menus. The following sections describe how to use the Client Connection Manager main menu.

TO CONNECT TO A SESSION:

- 1 In the Client Connection Manager, double-click the desired connection.

| 2 | If... | then... |
|---|--|---|
| | the connection contains a valid user name and password, | the Terminal Server Client logs in as that user name. |
| | no user name and password are present in the connection, | the server logon screen appears. Log on as usual. When you log out of the NT server, you are returned to Windows. |

Logging Off a Terminal Server Session

TO LOG OFF A TERMINAL SERVER SESSION:

- 1 Click the Start menu, then click Log Off.

The Logoff Windows NT confirmation box is displayed.



Logoff Windows NT

- 2 Click **OK**.

Using the Client Connection Manager

Creating a New Connection

The Client Connection Manager wizard guides you through the steps required to configure a connection to a terminal server.

TO CREATE A NEW CONNECTION:

- 1 In the Client Connection Manager, click **File**, then **New Connection...**

The first screen of the Client Connection Manager wizard is displayed.



Client Connection Manager wizard

2 Click **Next**.

The next screen of the Client Connection Manager wizard is displayed.



Client Connection Manager wizard

3 Type the Connection name.

4 Type the Server name or IP address, or click **Browse** to choose from the available servers.

5 Click **Next**.

The next screen of the Client Connection Manager wizard is displayed.

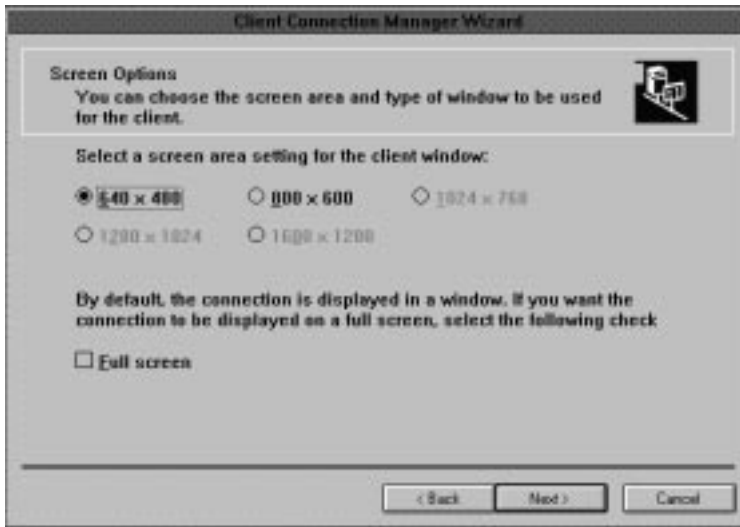


Client Connection Manager wizard

| 6 | If you... | then... |
|---|--|--|
| | enter values for Username, Password, and Domain, | the user will be automatically logged on to the server. |
| | leave these fields blank, | the server prompts for this information when the user connect. |

7 Click Next.

The next screen of the Client Connection Manager wizard is displayed.



Client Connection Manager wizard

8 Select the window size.

9 To make the connection window full fit the entire screen, select Full screen.

10 Click Next.

The next screen of the Client Connection Manager wizard is displayed.

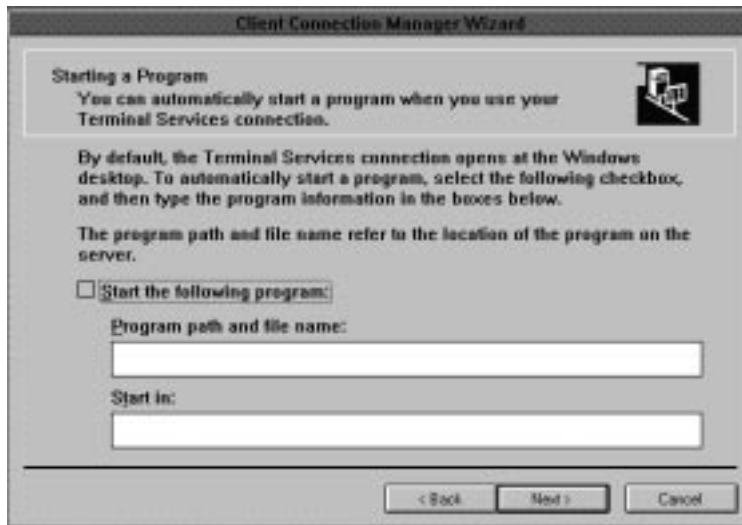


Client Connection Manager wizard

| 11 | If... | then... |
|----|---|---|
| | the user is connecting by modem or over a slow network, | select Enable data compression . |
| | the user will frequently save bitmaps to disk, | select Cache bitmaps . |

12 Click Next.

The next screen of the Client Connection Manager wizard is displayed.

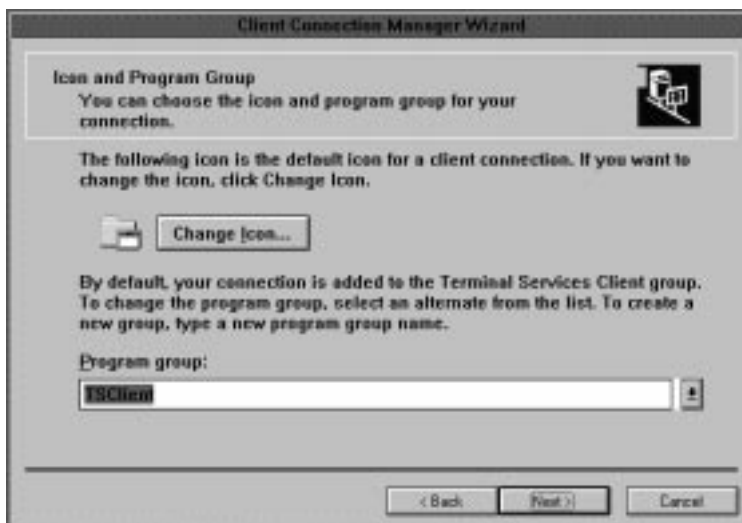


Client Connection Manager wizard


| 13 | If... | then... |
|----|--|--|
| | you want the Terminal Services connection to open at the Windows desktop | click Next . |
| | you want the Terminal Services connection to automatically open a particular program | <ol style="list-style-type: none"> 1 select Start the following program: 2 Type the path and file name, then type the name of the program the Terminal Services connection should start in. 3 Click Next. |

14 Click Next.

The next screen of the Client Connection Manager wizard is displayed.



Client Connection Manager wizard

| 15 | If... | then... |
|----|--|---|
| | <p>you want to change the default icon for the Client Connection Manager</p> | <ol style="list-style-type: none"> 1 Click Change Icon. <i>The Change Icon dialog box is displayed.</i>  <ol style="list-style-type: none"> 2 Select the icon you want from the Change icon field. 3 Click OK. |
| | <p>you want to keep the default icon for the Client Connection Manager</p> | <p>go to step 16.</p> |

16 Click Next.

The final screen of the Client Connection Manager wizard is displayed.



17 To save this connection, click Finish.

DELETING A CONNECTION

TO DELETE A CONNECTION:

- 1 In the Client Connection Manager, select the connection you want to delete.
- 2 Click **File**, then select **Delete**.

The Confirm connection delete confirmation box is displayed.



Confirm connection delete

- 3 Click **Yes** to confirm the deletion.

Configuring Terminal Server Connection Properties

TO CONFIGURE TERMINAL SERVER CONNECTION PROPERTIES:

- 1 Select the connection whose properties you want to configure.
- 2 Click **File**, then select **Properties**.

The Properties dialog box is displayed.



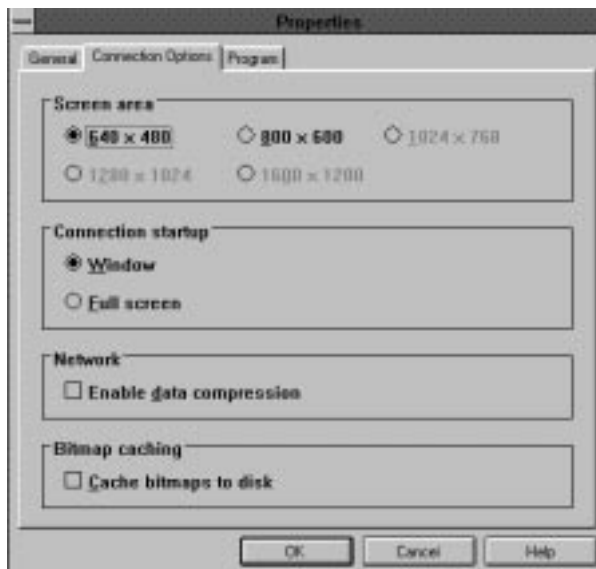
Properties

The General tab is the default tab.

- 3 Make any changes in the General tab.

- 4 Click the Connection Options tab.

The Connection Options tab is displayed.



Connection Options

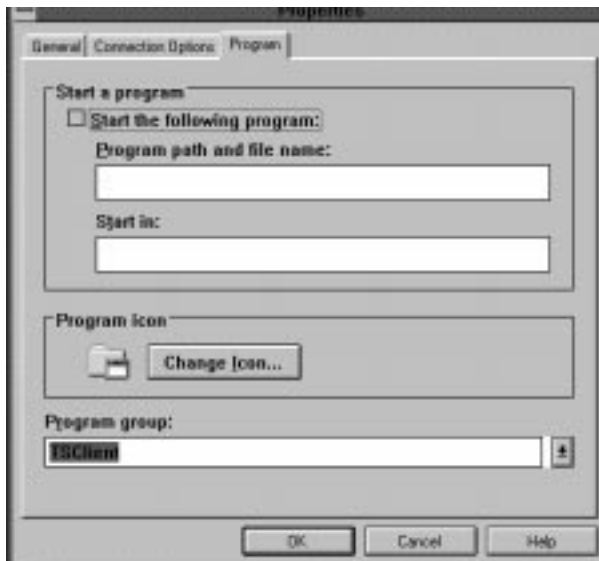
- 5 Make any changes in the Connection Options tab.

Connection Options field descriptions:

- **Connection startup:** the connection opens in a window by default. To open the connection in full screen, select **Full screen**.
- **Network:** if the user is connecting by modem or over a slow network, select **Enable data compression**.
- **Bitmap caching:** if the user will frequently save bitmaps to disk, select **Bitmap caching**.

6 Click the Program tab.

The Program tab is displayed.



Program

7 Make any changes to the Program tab.**Program tab field descriptions:**

- **Start a program:** this field indicates whether the connection opens the NT desktop or only a specific application. See step 13 under To Create a New Connection, page 71, for more information.
- **Program icon:** you can change the connection icon by clicking Change Icon... See step 15 under to Create a New Connection, page 71, for more information.

Using Dial-Up Networking

Caution: If your NetXpress has a factory-installed modem, all dial-up and PPP settings are preconfigured. No further configuration is necessary. Attempting to change the configuration of the factory-installed modem may cause dial-up networking to work improperly.

TO OPEN THE SHIVAREMOTE CONNECTION WINDOW:

- 1 Click **Start, Programs, Dial Up**.

The ShivaRemote Connect window is displayed.



ShivaRemote Connect

TO OPEN A CONNECTION:

- 1 Click **File, Open**.

The Open Connection File dialog box is displayed.



Open Connection File

- 2 Select the connection you want to open.

TO COPY A CONNECTION:

- 1 Open the connection you want to copy.
- 2 Click **File, Copy**.

Creating a new Dial-Up Connection

TO CREATE A NEW CONNECTION:

- 1 In the ShivaRemote Connect window, click **File, New**.

A new connection window is displayed.



new connection

- 2 Type the connection information in the appropriate fields.

Configuring a Dial-Up Connection

TO CONFIGURE A CONNECTION:

- 1 In the connection window, click **Options**.

The Connection File Options dialog box is displayed.



Connection File Options

- 2 Make any necessary changes.

Configuring Port Setup

TO CONFIGURE THE PORT SETUP:

- 1 In the remote connection menu bar, click **Tools, Port Setup...**

The Port Setup dialog box is displayed.



Port Setup

- 2 Configure the port setup as needed.

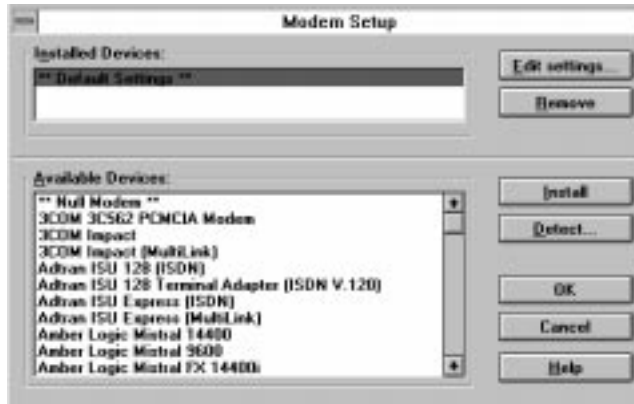
Installing and Configuring Modems for Dial-Up Connections

Caution: If your NetXpress has a factory-installed modem, all dial-up and PPP settings are preconfigured. No further configuration is necessary. Attempting to change the configuration of the factory-installed modem may cause dial-up networking to work improperly.

TO INSTALL A MODEM:

- 1 In the Port Setup dialog box, click **Modem Setup...**

The Modem Setup dialog box is displayed.



Modem Setup

- 2 In the Available Devices list box, select the modem you want to install.
- 3 Click **Install...**

The selected modem is displayed in the Installed Devices list box.

TO EDIT THE MODEM'S CONFIGURATION:

- 1 Click the modem you want to configure, then click **Edit Settings...**

The Edit Modem Configuration dialog box is displayed.



Edit Modem Configuration

- 2 Make the necessary changes.

TO REMOVE AN INSTALLED MODEM:

- 1 In the Installed Devices list box, select the modem to be removed.
- 2 Click **Remove**.

The selected modem is removed.

Appendix—ICA Administrator

The following Appendix describes the features disabled to optimize performance on the NetXpress XL.

Remote Application Manager Entry Setup

NETWORK PROTOCOLS

The only available Network Protocol is TCP/IP.

CHANGE ICON

The ability to browse for an icon is disabled.

PROGRAM GROUP

The ability to add entry to a program group is disabled.

Remote Application Manager Settings

PREFERENCES

The ability to allow automatic client updates is disabled.

DISK CACHE

The ability to change the amount of disk space used for disk caching and the disk cache directory are disabled.

EVENT LOGGING

The ability to change event log file name and the ability to change overwrite/append options are disabled.

Configuring Modems

The ability to add a new modem with a floppy disk is disabled.