



Daylight Savings Time Change 2007

A Technote by
Systems Engineering

March 2007

Summary

In 2005 and 2006, Daylight Saving Time begins for most of the United States at 2 a.m. on the first Sunday of April. Time reverts to standard time at 2 a.m. on the last Sunday of October. In August of 2005 the United States Congress passed the Energy Policy Act, which changes the dates of both the start and end of daylight saving time. When this law goes into effect in 2007, DST will start three weeks earlier (2:00 A.M. on the second Sunday in March) and will end one week later (2:00 A.M. on the first Sunday in November) than what had traditionally occurred.

This technote describes the updates needed in Wyse Products to implement these changes.

Audience

Customers, Customer Support, and Systems Engineering Group

Affected Products

Several Wyse products are affected by 2007 DST legislation. Updates to these products are being developed and tested. Some of them are currently available, with the remainder scheduled to be released from January 2006 through early March 2007.

Issues

Thin clients are different from traditional PCs because they rely on the server to deliver applications to the users. Impact of the daylight savings change to Wyse customers is significantly lower for thin clients as opposed to PCs. The thin client users access the server to use their applications.

The change in DST 2007 will have an impact on some legacy application as well as automated and technology reliant products, for example:

- Calendar / scheduling applications
- Date / time calculations (current and historical)
- Transaction logging (UTC vs. Local Time)
- Tariff billing applications

In many cases, making the necessary changes to accommodate the new DST legislation will be a relatively minor task. Users may need to manually adjust the time on their devices when the change occurs.

Table of Contents

WYSE THIN OS / WYSE V6 LINUX EXAMPLES:	5
CE – INSTALLING DST 2007 ADD-ON (FTP).....	6
CE – INSTALLING DST 2007 ADD-ON (WDM)	8
XPE – INSTALLING DST 2007 HOT FIX (WDM).....	12
LINUX – INSTALLING DST 2007 HOT FIX (FTP ONLY).....	15
LIMITATION OF LIABILITY:.....	17

Table of Illustrations

FIGURE 1 - EXAMPLE OF DST SETTINGS IN WYSE THIN OS TERMINALS	5
FIGURE 2 - SCREENSHOT OF ADDING DST PATCH IN LINUX V6 TERMINALS	5
FIGURE 3 – CE FTP UPGRADE OPTIONS	7
FIGURE 4 - REGISTERING A CE RSP PACKAGE.....	9
FIGURE 5 - SELECTING A CE SOFTWARE PACKAGE TO REGISTER	9
FIGURE 6 - LISTING CE REGISTERED ADD-ONS	10
FIGURE 7 - SELECT WHEN TO APPLY THE PACKAGE.....	10
FIGURE 8 - REGISTERING AN XPE RSP PACKAGE.....	12
FIGURE 9 - SELECTING AN XPE SOFTWARE PACKAGE TO REGISTER.....	12
FIGURE 10 - LISTING XPE REGISTERED ADD-ONS	13
FIGURE 11 - SELECT WHEN TO APPLY THE PACKAGE.....	13
FIGURE 12 - INSTALLING THE DST HOT FIX ON LINUX-BASED THIN CLIENTS.....	15

Procedure

<p>Wyse Thin OS</p>	<p>No patch needed</p>	<p>Patch not required. The time can be set to roll over now. However you will need to update the wnos.ini (or manually from in the terminal GUI). To achieve this set the following line in the wnos.ini file on one line:</p> <p>TimeZone="GMT - 05:00" ManualOverride=yes Daylight=yes Start=030207 End=110107 TimeZoneName="Eastern Standard Time" DayLightName="Eastern Daylight Time"</p> <p>This line should be pasted as one line in your WNOS.ini file. The Start= End= parameters is defined as month week day. So Start=030207 is change time in the third month (March) on the second week on the seventh day (Sunday).</p> <p>If you are not using ini files, you need to manually go to the device and set the dates manually in Start→System Setup→System Preference. An example for Pacific Time is shown below.</p>
<p>Wyse Linux</p>	<p>Patch required 5150, S50, V50, V50 Dual Video</p>	<p>Add-on is available at our Software Downloads page.</p> <p>You need to download the file and put it in the FTP server in the folder <i>ftproot/wyse/wlx/addons</i> You can supply FTP server info via DHCP or via Start→Control Panel→Network→FTP Server. The device will automatically load the add-on on next boot. Otherwise you can go to Start→Control Panel→Addons and upgrade manually. The pictures below provide an example.</p>
<p>Windows XP Embedded (SP1, SP2)</p>	<p>Patch required 9150, S90, V90, V90 Dual Video, 941g</p>	<p>A Wyse Device Manager script is available for installing the hotfix, or removal if a rollback is required. Add-on is available at our Software Downloads page. If Wyse Device Manager is not available then you can manually extract the file <i>tzchange.exe</i> from the same package and copy in c:\windows\system32 folder of your XPE device. Also the <i>hklim.reg</i> file needs to be extracted and merged with main registry.</p>
<p>Windows CE .NET 4.0, 4.1, 4.2, and CE 5.0</p>	<p>Update required in the models: 3125, 3150, 3230, 3235, 3320, 3360, 3450, 3455, 3630, 3650, S30, V30, V30 Dual Video</p>	<p>For information, please visit Microsoft's help page for Windows CE devices at: http://support.microsoft.com/kb/923027</p> <p>Wyse has provided the add-on or builds for download since end of January 2007.</p> <ol style="list-style-type: none"> 1. F/w for CE 5.0 – Platform V30/S30/3150 having DST 2007: - Released on 1/10/2007 - build # 571 – not available in Wyse site 2. F/w for CE 5.0 – platform VL30 having DST 2007: - Released on 1/24/2007 – build 563.5 – not available in Wyse site 3. DST add-on for CE 5.0: - Released on 1/24/2007 4. DST add-on for CE 4.1: - Released on 1/24/2007 5. DST add-on for CE 4.2: - Released on 1/26/2007 6. DST add-on for CE 4.0: - Released on 1/24/2007 <p>See the sections titled “CE – Installing DST 2007 Add-on (FTP)” and “CE – Installing DST 2007 Add-on (WDM)” below.</p> <p>Wyse provides a conversion kit software upgrade to Windows CE 4.2 for the Winterm™ 3125, 3360, and 3235 thin clients. For more information, please contact Wyse Sales.</p>
<p>Windows CE 2.12</p>	<p>Not Supported</p>	<p>Windows CE 2.12 has reached the end of its support cycle and will not have a patch provided by Microsoft. Wyse recommends that current CE v2.12 customers upgrade to Windows CE .NET 4.2. Wyse provides a conversion kit software upgrade to Windows CE 4.2 for the Winterm™ 3125, 3360, and 3235 thin clients. For more information, please contact Wyse Sales.</p>

Wyse Thin OS / Wyse V6 Linux Examples:

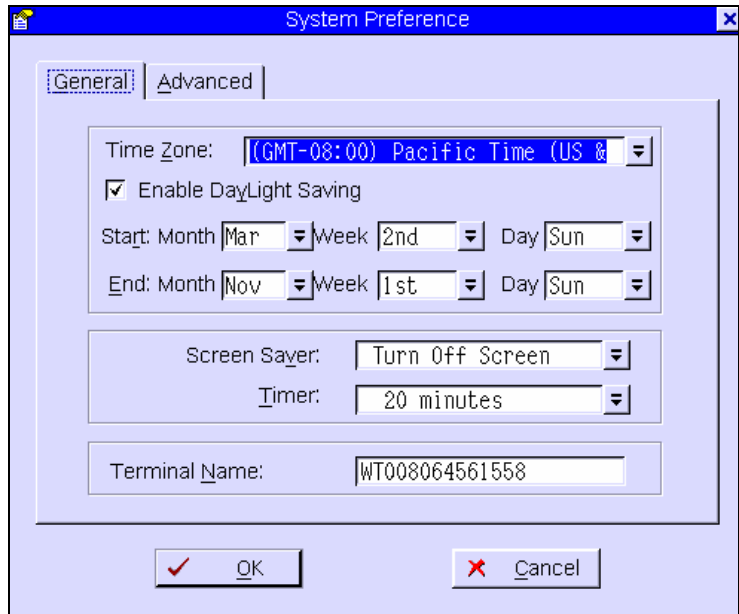


Figure 1 - Example of DST settings in Wyse Thin OS Terminals

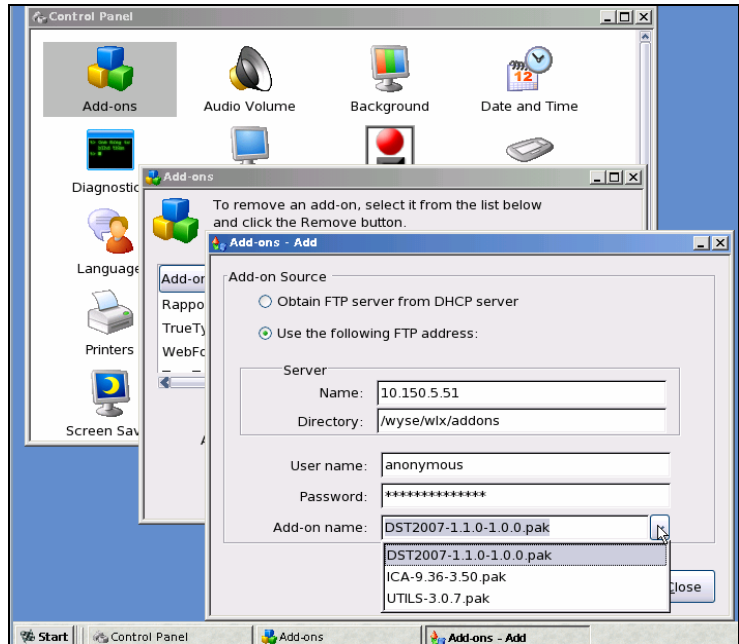


Figure 2 - Screenshot of adding DST patch in Linux V6 Terminals

CE – Installing DST 2007 Add-on (FTP)

Background:

There are currently four version of Windows CE we support. These versions are 4.0, 4.1, 4.2 and 5.0.

There are four different versions of the DST 2007 Add-on, based on the specific version of the OS installed on the Wyse thin client.

The file name and version they apply to are as follows:

CE Version	Filename
4.0	Addon_DSTQFE400_B0001.exe
4.1	Addon_DSTQFE410_B0001.exe
4.2	Addon_DSTQFE420_B0001.exe
5.0	Addon_DSTQFE_B0001.exe

Installation Instructions:

1. Visit www.wyse.com and select Support > Downloads
2. Select your model from the Active or Retired box and press Search
3. Download the required Add-on based on the above list
4. Execute the self-extracting file in the FTP server and save the files in the default FTP path.
5. Copy the “.bin” and the “.ini” files to the /ftproot directory (c:\inetpub\ftproot for a default IIS based FTP server)
6. On the CE client, go to the “Control panel” and select the “Upgrade” icon
7. Under the “Local” tab, mark the option “Use Local FTP information”
8. In the “Server Name” box, enter the IP address of the server you copied the Add-on files from step 4
9. Leave the “Server Directory” box blank.
10. Leave the “User ID” and “Password” as is.
11. Press Upgrade

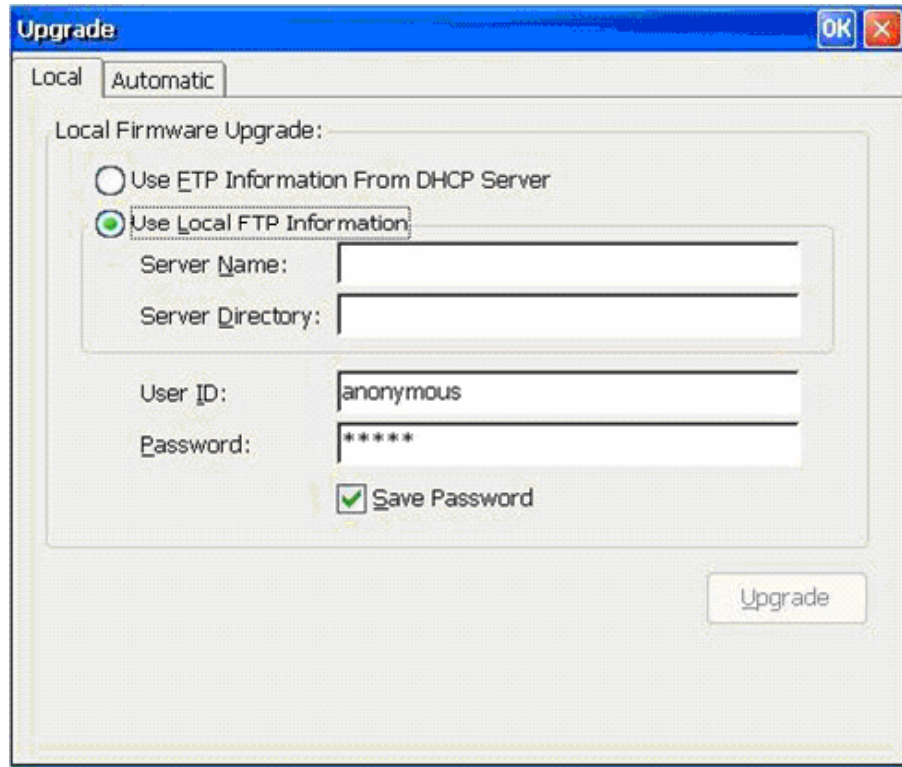


Figure 3 – CE FTP Upgrade Options

Verification:**START > SETTINGS > CONTROL PANEL > Date/Time**

- Under the **Time/Zone** Tab
 - o Make sure the Time/Zone is setup based on your US Location.
 - o Make sure **select "Automatically adjust clock for daylight saving changes"**
 - o When this is done, make sure select **APPLY** and then select **OK**.

- Re-launch Date and Time from the control panel. Under **Date & Time** Tab:
 - o Set Month:- **MARCH**
 - o Set Date:- **11**
 - o Set Year:- **2007**
 - o Set Time: **1:59:40AM**
 - o Make sure Select **APPLY** and then **OK**
 - o Re-launch **Date/Time** and watch the clock to run. Once the clock reaches March 11, 2007 2:00am, the clock will jump to 3:00am.

CE – Installing DST 2007 Add-on (WDM)

Background:

There are currently four version of Windows CE we support. These versions are 4.0, 4.1, 4.2 and 5.0.

There are four different versions of the DST 2007 Add-on, based on the specific version of the OS installed on the Wyse thin client.

The file name and version they apply to are as follows:

CE Version	Filename
4.0	Addon_DSTQFE400_B0001.exe
4.1	Addon_DSTQFE410_B0001.exe
4.2	Addon_DSTQFE420_B0001.exe
5.0	Addon_DSTQFE_B0001.exe

Installation Instructions:

1. Visit www.wyse.com and select Support > Downloads
2. Select your model from the Active or Retired box and press Search
3. Download the required Add-on based on the above list
4. Execute the self-extracting file in the WDM server
5. Start WDM
6. Right Click (with your mouse) on “Package Manager” and select “New > Package”
7. Select the first option (Register a Package from a Script file) and press “Next”

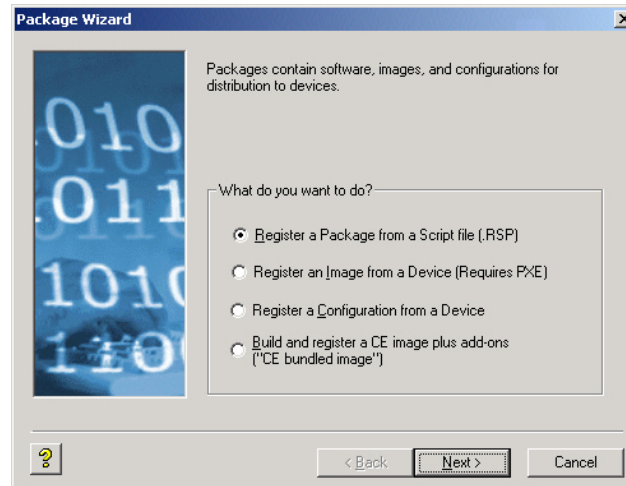


Figure 4 - Registering a CE RSP Package

8. To specify the Package path, browse to the path where the files from step 4 can be found, you will find two files, one that starts with “Addon*.rsp” and a second one that starts with “RM*.rsp”. Select the first one (Addon*.rsp) and press “Next”.

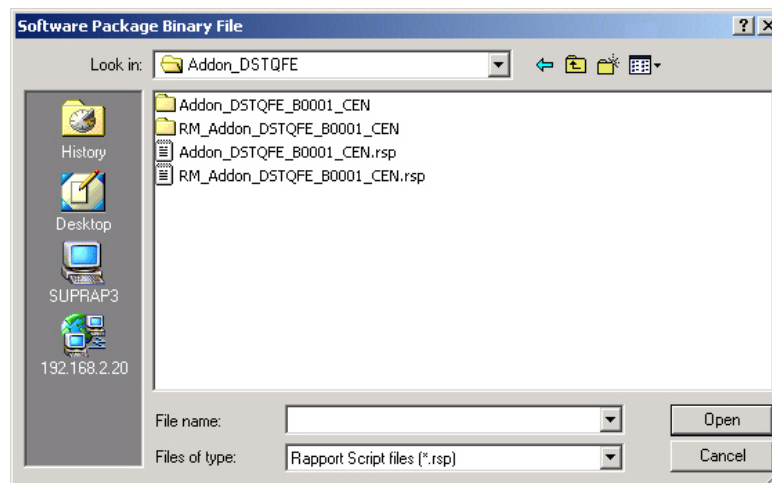


Figure 5 - Selecting a CE Software Package to Register

9. You will be shown the Package information, press “Next”
10. Your Package has now been imported. Now go to “Package Manager” and select “CE Addon”. The DST add-on should be displayed.

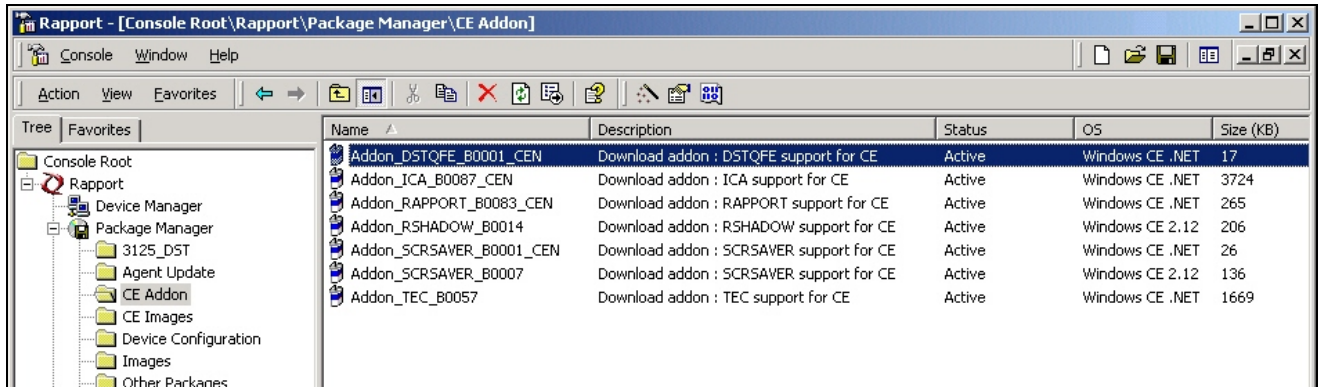


Figure 6 - Listing CE Registered Add-ons

11. Select the DST add-on (one click with the left mouse button) and drag it to the “Device Manager” icon on the left pane.
12. A pop-up screen displaying all the devices in the Device manager will be displayed.
13. Select the device(s) you want to install the add-on on an press “Next”
14. Select when you want to install the upgrade and press “Next”

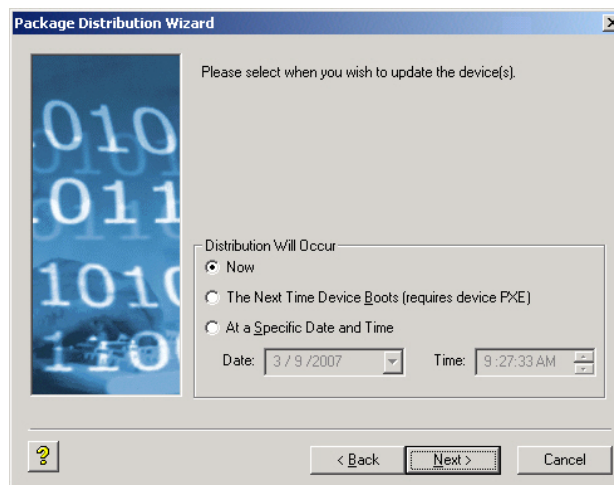


Figure 7 - Select when to apply the Package

15. Press “Next” on the following screen
16. Press “Finish” to complete the process.

Verification:

START > SETTINGS > CONTROL PANEL > Date/Time

- Under the **Time/Zone** Tab
 - o Make sure the Time/Zone is setup based on your US Location.
 - o Make sure **select “Automatically adjust clock for daylight saving changes”**
 - o When this is done, make sure select **APPLY** and then select **OK**.
- Re-launch Date and Time from the control panel. Under **Date & Time** Tab:
 - o Set Month:- **MARCH**
 - o Set Date:- **11**
 - o Set Year:- **2007**
 - o Set Time: **1:59:40AM**
 - o Make sure Select **APPLY** and then **OK**
 - o Re-launch **Date/Time** and watch the clock to run. Once the clock reaches March 11, 2007 2:00am, the clock will jump to 3:00am.

XPe – Installing DST 2007 Hot Fix (WDM)

Background:

There are currently two versions Windows XPe we support. These versions are Service Pack 1 and Service Pack 2. This Hot Fix applies to both versions.

This patch is required for all XPe-based Wyse thin clients.

Installation Instructions:

1. Visit www.wyse.com and select Support > Downloads
2. Select your model from the Active or Retired box and press Search
3. Download the **XPe_DST_All.exe** file
4. Execute the self-extracting file in the WDM server (by default it will extract to c:\WDM Packages)
5. Start WDM
6. Right Click (with your mouse) on “Package Manager” and select “New > Package”
7. Select the first option (Register a Package from a Script file) and press “Next”

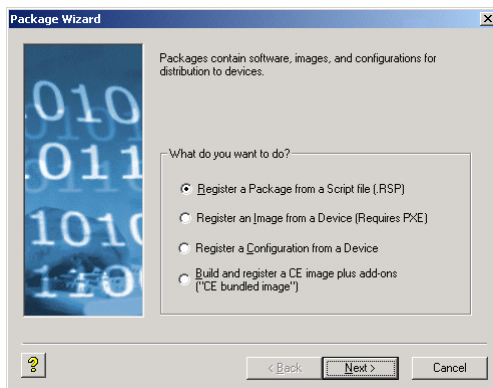


Figure 8 - Registering an XPe RSP Package

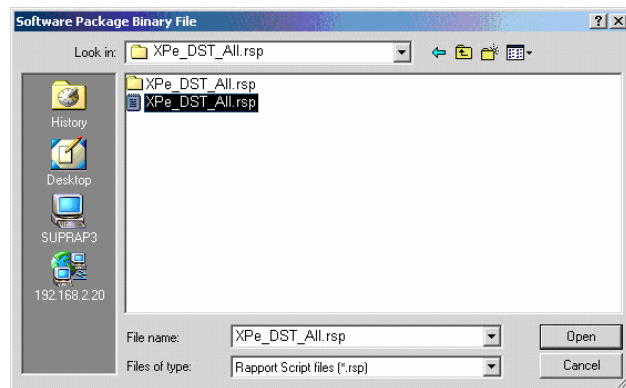


Figure 9 - Selecting an XPe Software Package to Register

8. To specify the Package path, browse to the path where the files from step 3 can be found, you will find a single file name XPe_DST_All.rsp. Select it and press “Next”.
9. You will be shown the Package information, press “Next”

10. Your Package has now been imported. Now go to “Package Manager” and select “Other Packages”. The DST add-on should be displayed.

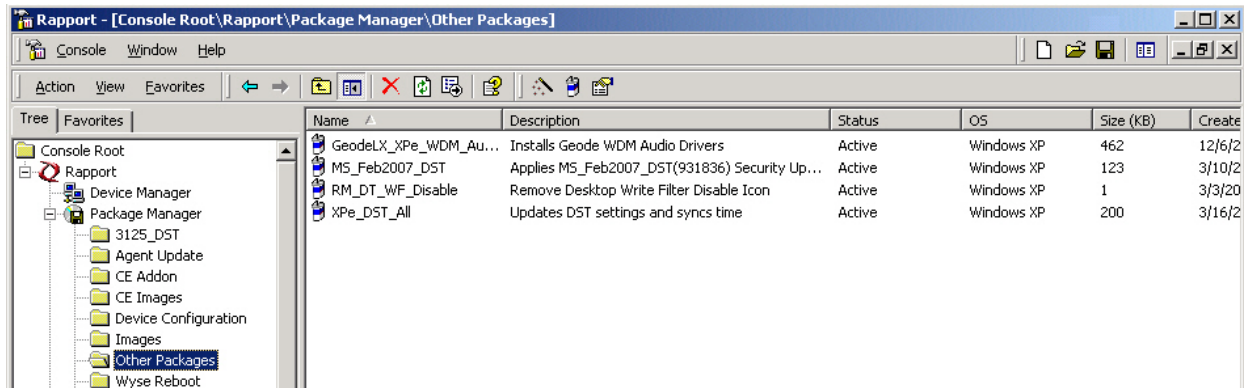


Figure 10 - Listing XPe Registered Add-ons

11. Select the XPe_DST_All package (one click with the left mouse button) and drag it to the “Device Manager” icon on the left pane.
12. A pop-up screen displaying all the devices in the Device Manager will be displayed.
13. Select the device(s) you want to install the add-on on an press “Next”
14. Select when you want to install the upgrade and press “Next”

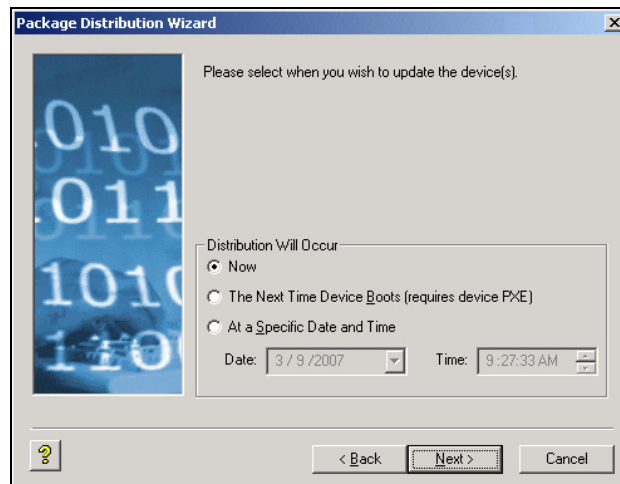


Figure 11 - Select when to apply the Package

15. Press “Next” on the following screen
16. Press “Finish” to complete the process.

Verification:

START > SETTINGS > CONTROL PANEL > DATE AND TIME

- Under **TIME ZONE** Tab
 - o Make sure the TIME ZONE is setup correctly base on your US Location.
 - o Make sure **select Automatically adjust clock for daylight saving changes.**
 - o When this is done, make sure select **APPLY** and then select **OK.**
- Re-launch Date and Time from the control panel. Under **Date & Time** Tab:
 - o Set Month:- **MARCH**
 - o Set Date:- **11**
 - o Set Year:- **2007**
 - o Set Time: **1:59:40AM**
 - o Make sure Select **APPLY** and then **OK**
 - o Re-launch **Date and Time** and watch the clock to run. Once the clock reaches March 11,2007 2:00am, the clock will jump to 3:00am.
- o Set Time: **1:59:40AM**
- o Make sure Select **APPLY** and then **OK**
- o Re-launch **Date/Time** and watch the clock to run. Once the clock reaches March 11,2007 2:00am, the clock will jump to 3:00am.

Linux – Installing DST 2007 Hot Fix (FTP Only)

Background:

This patch is required for all Linux-based thin clients.

Installation Instructions:

1. Visit www.wyse.com and select Support > Downloads
2. Select your model from the Active or Retired box and press Search
3. Download the **DST2007-1.1.0-1.0.0.pak** file
4. Copy this file to the /wyse/wlx/addons directory on your FTP server
5. On the Linux thin client, go to the “Control panel” and select the “Add-ons” icon

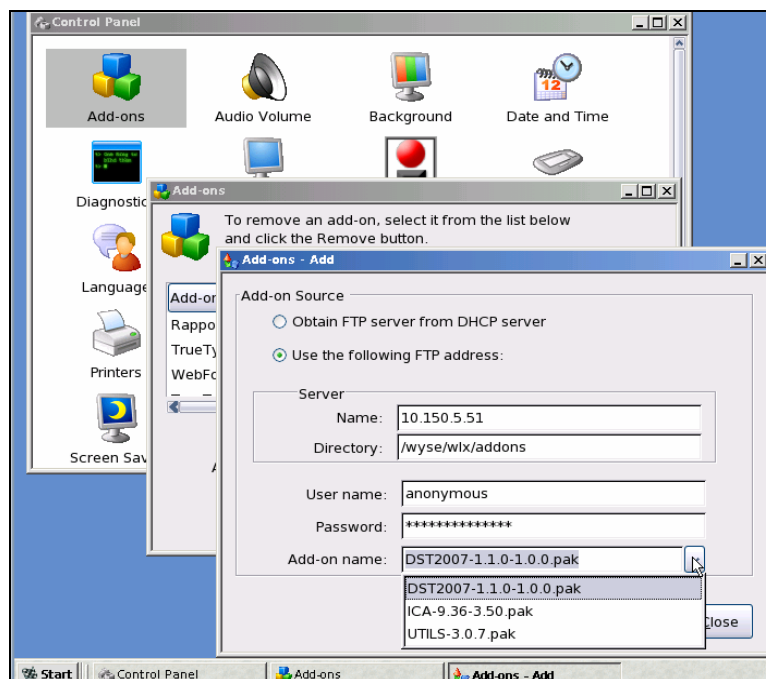


Figure 12 - Installing the DST Hot fix on Linux-based thin clients

6. Click on the “Add” button.
7. In the “Server Name” box, enter the IP address of the server you copied the Add-on files from step 4
8. Enter /wyse/wlx/addons (or the one appropriate for your environment) in the “Server Directory” box.
9. Leave the “User ID” and “Password” as is.
10. Click “Add” to install.

Verification:

START > CONTROL PANEL > DATE and TIME

- Under **LOCAL** Tab
 - o Make sure the TIME ZONE is setup correctly base on your US Location.
 - o Set Date to **MARCH, 11, 2007**
 - o Set Time: **1:59:40AM**
 - o Select **OK**
 - o Re-launch **Date and Time** and watch the clock to run. Once the clock reaches March 11,2007 2:00am, the clock will jump to 3:00am.
- o Re-launch **Date and /Time** and adjust to the correct date and time.

Limitation of Liability:

<http://www.wyse.com/about/liability.asp>

© 2007 Wyse Technology Inc. All rights reserved.

The Wyse logo and Wyse are trademarks of Wyse Technology Inc. Other product names mentioned herein are for identification purposes only and may be trademarks and/or registered trademarks of their respective companies. Specifications subject to change without notice. Some features require support by server operating system and protocol.

www.wyse.com