



# Configuring WTOS Daylight Saving in ICA and RDP Sessions

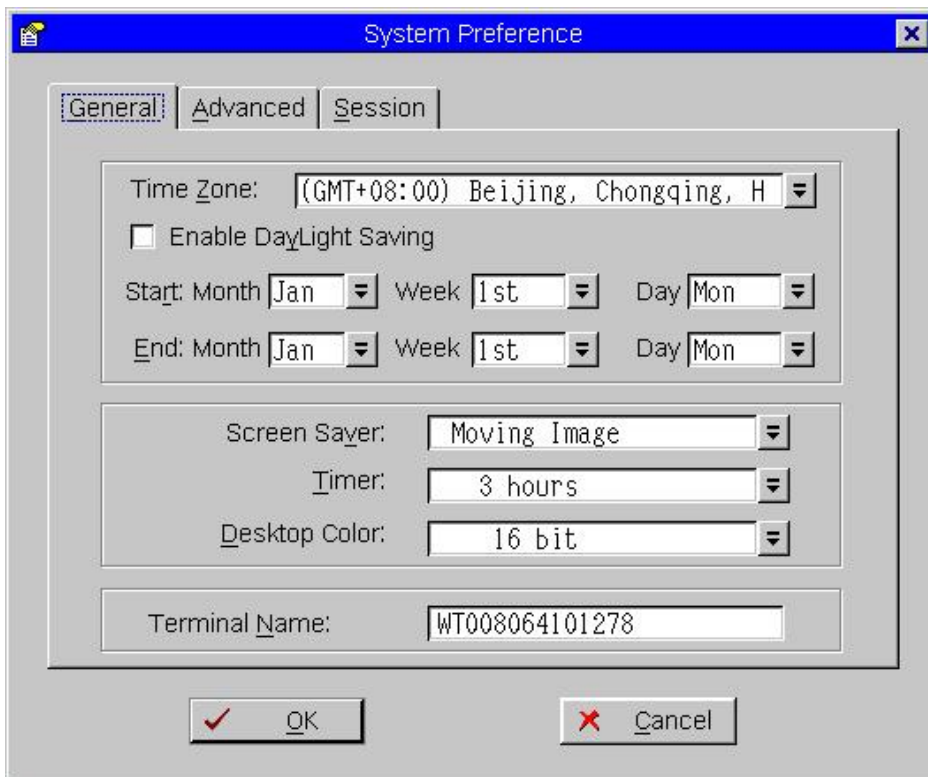
---

## ***Configuring WTOS Daylight Saving for an ICA Session***

The System Preference dialog box allows you to enable and configure Daylight Saving for an ICA Session.

**Note:** The **Enable Daylight Saving** check box is not available for an RDP session. For an RDP session you must enable the Allow Time Zone Redirection function (see *Configuring WTOS Daylight Saving for an RDP Session*).

To access the System Preference dialog box and configure Daylight Saving for an ICA session, click the User Name button (located at the bottom-left side of the taskbar), select **System Setup**, select **System Preferences**, and then click the **General** tab.



Use the following guidelines:

- **Enable Daylight Saving** - Allows you to enable the daylight saving settings for an ICA session. When selected, the six list boxes must be properly configured to define the daylight saving starting (month/week/day) and ending (month/week/day) periods. Use the following guidelines:
  - **Month** - Specifies the month in the year from **January** through **December**.
  - **Week** - Select **1** through **4** for the week in the month. Week **Last** denotes the last week in the month.
  - **Day** - Specifies the day of the week from **Monday** through **Sunday**.

## ***Configuring WTOS Daylight Saving for an RDP Session***

To configure daylight saving for an RDP session, you must enable the Allow Time Zone Redirection function. Use the following guidelines:

- Run *gpedit.msc* to open the Group Policy dialog box.
- Click **Computer Configuration** in the Local Computer Policy tree.
- Expand the *Administrative Templates* folder.
- Expand the *Windows Components* folder.
- Expand the *Terminal Services* folder.
- Click **Client/Server data redirection** to open the Setting list.
- Right-click **Allow Time Zone Redirection** and select **Properties** to open the Allow Time Zone Redirection Properties dialog box.
- Select the **Enabled** option, and then click **OK**.
- Close the Group Policy dialog box.

© 2007 Wyse Technology Inc. All rights reserved.

The Wyse logo and Wyse are trademarks of Wyse Technology Inc. Other product names mentioned herein are for identification purposes only and may be trademarks and/or registered trademarks of their respective companies. Specifications subject to change without notice. Some features require support by server operating system and protocol.  
[www.wyse.com](http://www.wyse.com)